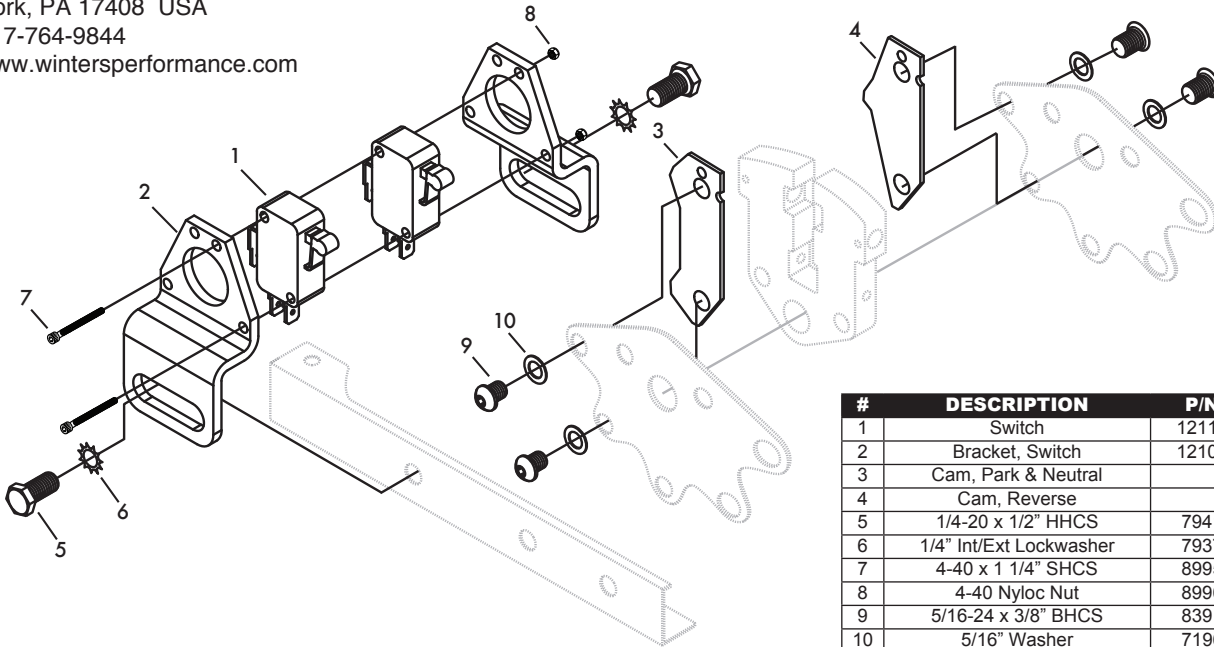




SAFETY SWITCH KIT P/N 1089-2

Winters Performance Products, Inc.
1580 Trolley Road
York, PA 17408 USA
717-764-9844
www.wintersperformance.com



#	DESCRIPTION	P/N	QTY
1	Switch	12118	2
2	Bracket, Switch	12108	2
3	Cam, Park & Neutral		1
4	Cam, Reverse		1
5	1/4-20 x 1/2" HHCS	7941	2
6	1/4" Int/Ext Lockwasher	7937	2
7	4-40 x 1 1/4" SHCS	8995	2
8	4-40 Nyloc Nut	8996	2
9	5/16-24 x 3/8" BHCS	8391	4
10	5/16" Washer	7196	4

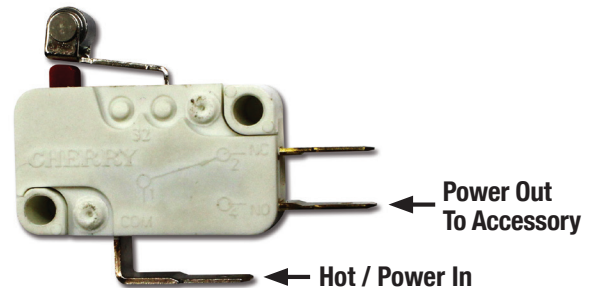
© Winters Performance Products, Inc. See current catalog or visit web site for limited warranty & venue provision.

MP142

Sidewinder Double Safety Switch



- Disassemble shifter down to shifter body, side plates and rails.
- Assemble switch and brackets using two 4-40 x 1-1/4 SHCS and 4-40 Nylok nut.
- Bolt the Park and Neutral Cam and the Reverse Cam to the Shifter body using Four 5/16-24 x 3/8 BHCS and 5/16 washer. Note the position of each Cam to assure correct function.
- Insert Shifter body into a side plate. With gate plate retainers installed, slide gate plate into place being sure the Park position is opposite of the switch Cams. Install the other side plate and tighten all shifter hardware. Remember to keep shifter rails parallel and level to each other. Knob may be installed at this time.
- Install switch assembly onto shifter rails. Fine tune switch function by sliding switch into and away from switch Cams. Switches will make small clicks when activated, shift through Park, Reverse, and Neutral to be sure of proper adjustment.
- Install wire leads onto switch, special attention needs to be paid to assure switch and function match the appropriate Cam. Wire terminals off of the bottom two spadds may need to be bent to accommodate cable clearance.
- Shifter is now ready to be installed, if shifter has a console, install that now, then into the vehicle.



NOTE: Some Cams may need to be cleared so the Jam nut on the cable can pass freely.