



Winters Performance Products, Inc.
1580 Trolley Road
York, PA 17408 USA
717-764-9844
www.wintersperformance.com



Install Kit P/N 3027

Ford® A4LD Shifter

Part Nos. 347-1, 347-1B

- A. Remove shifting mechanism from transmission.
- B. Assemble ball joint, lockwasher, and nut, to Winters® linkage arm, then remove nut and replace present aerm with Winters® linkage arm.
- C. Remove two pan bolts and install cable bracket. Ensure pan bolt length is adequate.
- D. Plan location of console and cable route in car. Keeping bends to a minimum will enhance the shift feel.
- E. Drill 5/8" diameter hole in floor for cable to exit. By inserting a drill or rod in hole and bending the sheet metal you can obtain a hole that will allow the cable to enter and exit more smoothly. After feeding the cable through, secure console in position using screws as shown in figure 3.
- F. Using screws, clamps, lockwasher, and nuts, attach cable to bracket as illustrated.
- G. Attach quick-disconnect to ball joint on linkage arm. When console shift lever is in park position, the linkage arm should be all the way forward.
- H. Check adjustment in each gear. By loosening lock nut and screwing the quick-disconnect either in or out, corrective adjustments can be made. If additional adjustment is necessary, a similar arrangement within the console is provided.



#	Description	P/N
1	Linkage Arm	12748
2	Cable Bracket	12747
3	Hardware Kit	6062

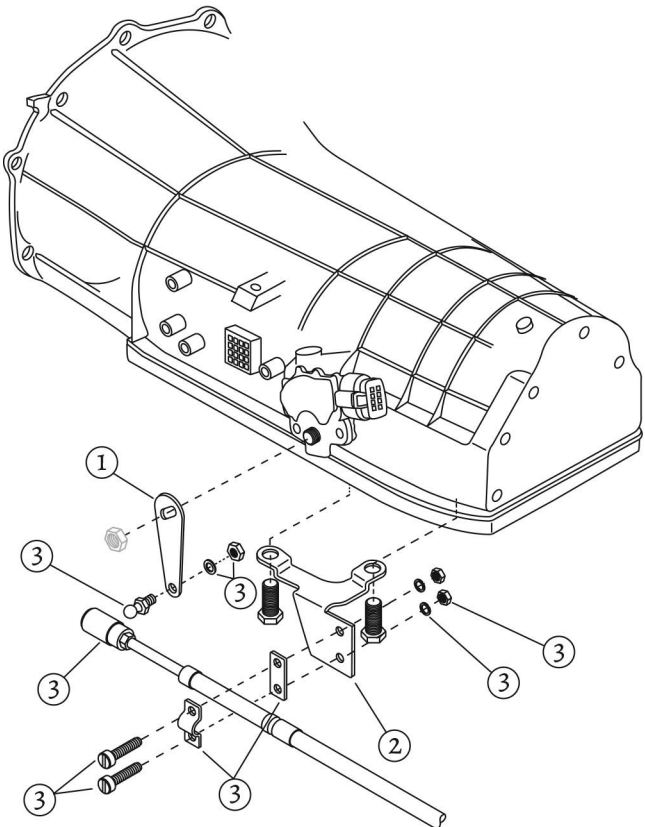
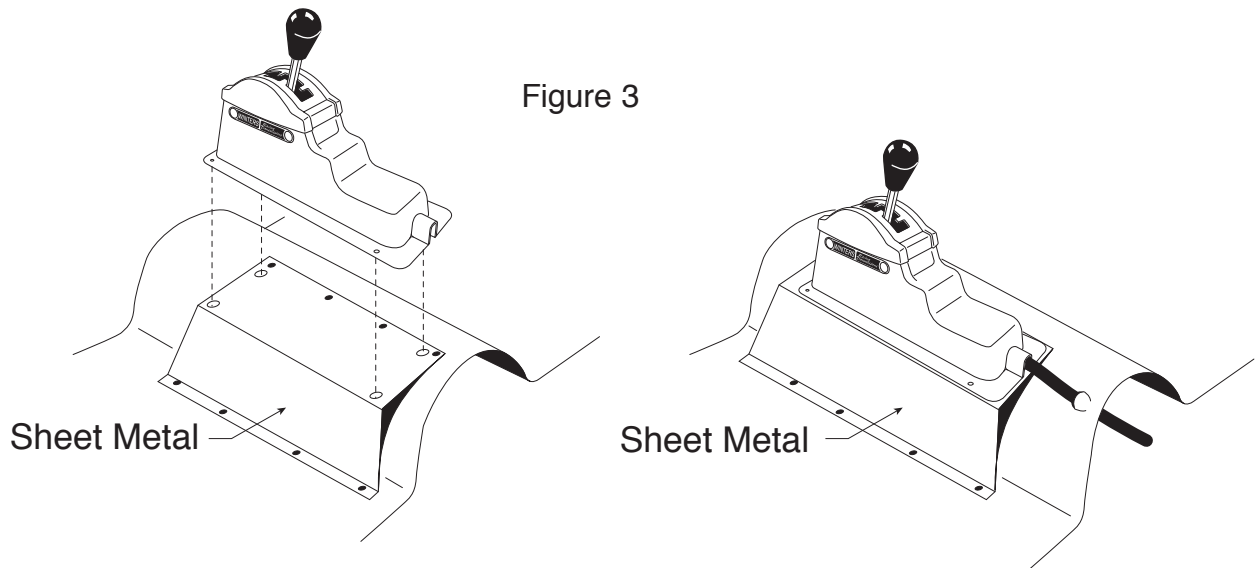


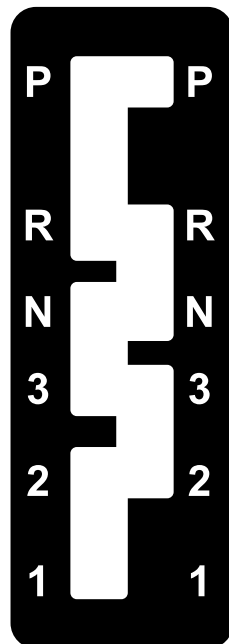
Figure 3



Illustrated above is a suggestion for tunnel-mount applications of the Winters shifter. By bending a piece of sheet metal suitable for your particular application, a flat surface will be obtained allowing your shifter to be securely fastened in the proper location. Make sure the sheet metal is of substantial gage thickness (18 or 20 ga.) or securely braced to minimize undesirable vibration.

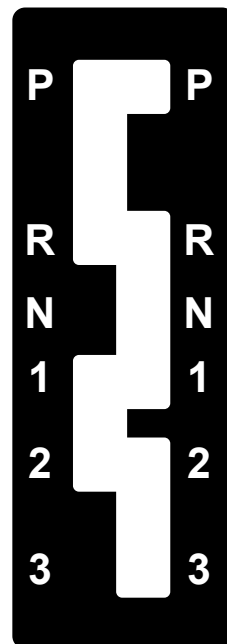
Ford® 'A4LD'
Gate Plate

Stock



P/N 3286

Rock Crawler



P/N 3286-1