



Winters Performance Products, Inc.

1580 Trolley Road

York, PA 17408 USA

717.764.9844

www.wintersperformance.com



## Install Kit P/N 3395

Ford® 'E4OD' Shifter

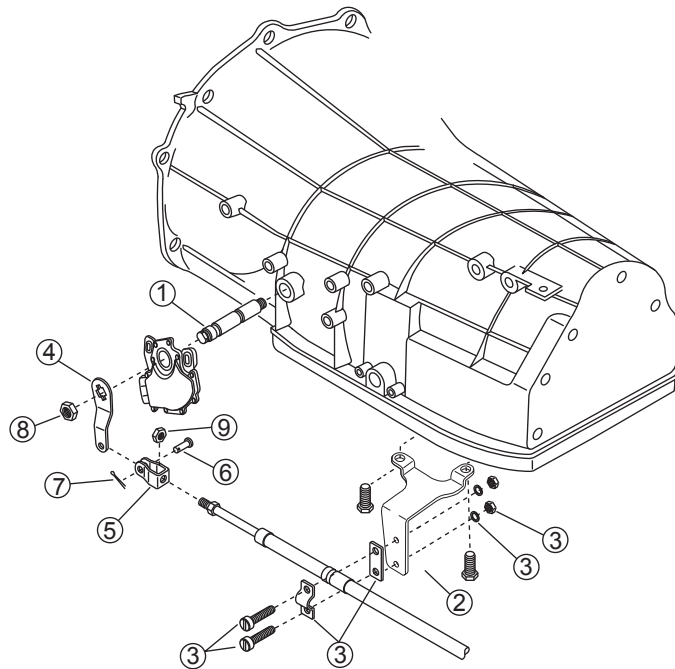
Part Nos. 337-1 and 337-1B

- A. Remove present shifting mechanism from transmission.
- B. Refer to appropriate transmission service manual for procedure to drain oil, remove oil pan and disassemble stock linkage arm and shaft.
- C. Replace stock shaft with Winters® shaft. (P/N 3721) Use appropriate assembly procedures from transmission service manual. Reinstall stock switch then attach Winters® linkage arm (P/N 3722) to Winters® shaft (P/N 3721) using linkage shaft nut (P/N 7766).
- D. Before re-assembling all parts to the transmission, make sure the Winters® linkage arm and shaft will operate thru all detent positions without interfering with any external transmission parts.
- E. Plan location of console in car and cable route. Keeping bends to a minimum will enhance the shift feel.
- F. Drill 5/8" diameter hole in floor for cable to exit. By inserting a drill or rod in hole and bending the sheet metal you can obtain a hole that will allow the cable to enter and exit more smoothly. After feeding the cable through, secure console in position using screws as shown in figure 3, page 14.
- G. Using screws, clamps, lockwasher, and nuts, attach cable to bracket as illustrated.
- H. Attach clevis bracket (P/N 3724) to end of cable using clevis nut (P/N 7926). Install end of cable to linkage arm using clevis pin (P/N 8743) and clip (P/N 8744).
- I. Check adjustment in each gear. By loosening lock nut and screwing the clevis bracket (P/N 3724) either in or out, corrective adjustments can be made. If additional adjustment is necessary, a similar arrangement within the console is provided.

### Hardware Kit P/N 3395

#### Kit Includes—

#	Description	P/N
1	Linkage Shaft	3721
2	Cable Bracket	3723
3	Hardware Kit	6062-1
4	Linkage Arm	3722
5	Clevis Bracket	3724
6	Clevis Pin	8743
7	Clevis Clip	8744
8	Linkage Shaft Nut	7766
9	Clevis Nut	7926



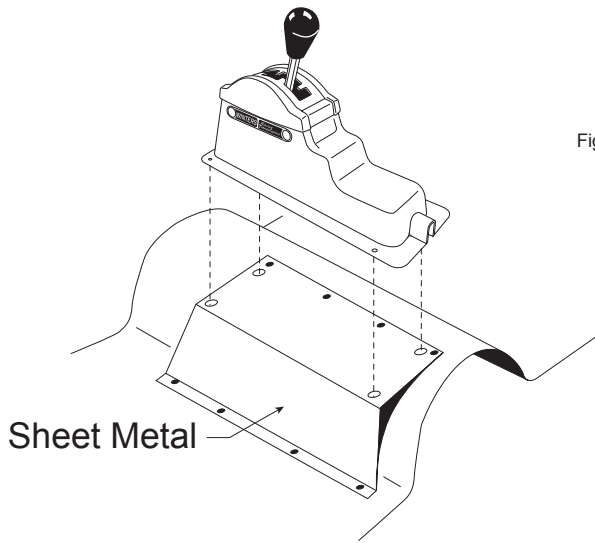
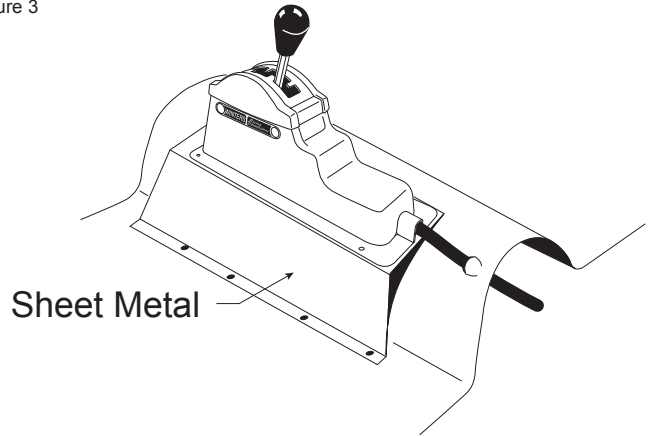


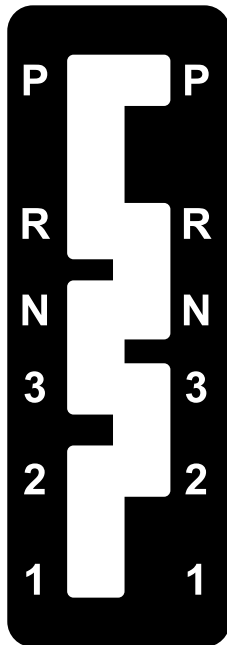
Figure 3



Illustrated above is a suggestion for tunnel-mount applications of the Winters shifter. By bending a piece of sheet metal suitable for your particular application, a flat surface will be obtained allowing your shifter to be securely fastened in the proper location. Make sure the sheet metal is of substantial gage thickness (18 or 20 ga.) or securely braced to minimize undesirable vibration.

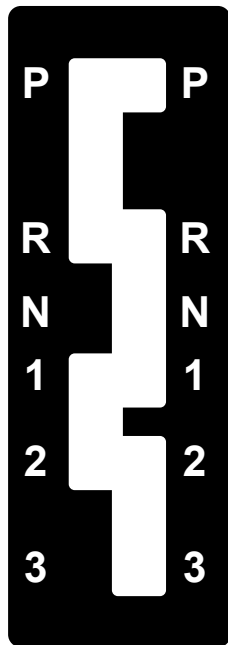
**Ford® E4OD  
Gate Plates**

Stock



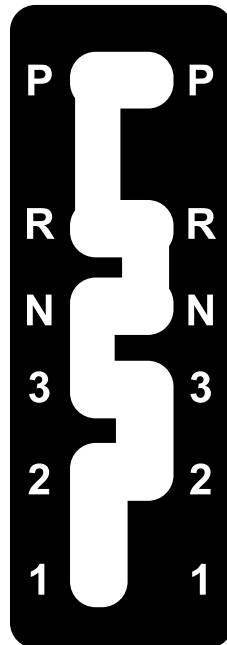
**P/N 3286**

Rock Crawler



**P/N 3286-1**

Lock-Out  
Stock Pattern



**P/N 3287**