



Winters Performance Products, Inc.
1580 Trolley Road
York, PA 17408 USA
717.764.9844
www.wintersperformance.com



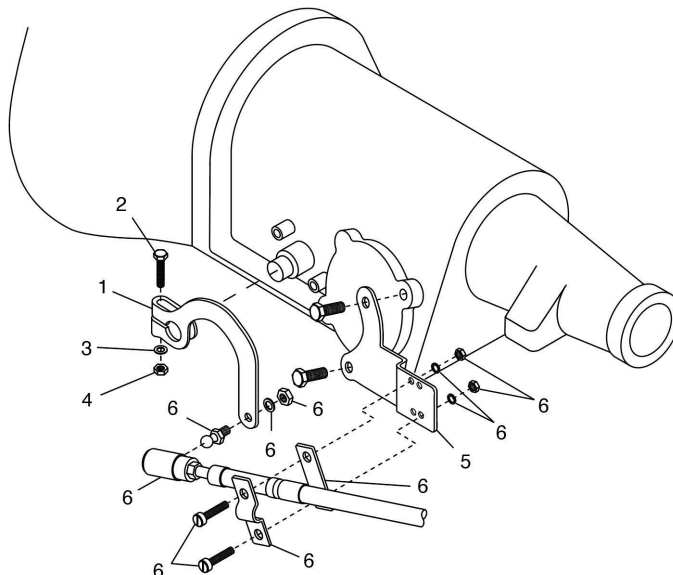
Install Kit P/N 3595

Ford C-4 Shifter

Part Nos. 357-1, 357-1B, 357-2 and 357-2B

- A. Remove present shifting mechanism from transmission including neutral start switch.
- B. Assemble ball joint, lockwasher, and nut, to the linkage arm, then push the linkage arm on the transmission linkage shaft until the arm is flush with the end of the shaft. By tightening screw and nut the arm will be secured in its proper position.
- C. Remove two rear servo bolts and install cable bracket. Ensure servo bolt length is adequate.
- D. Plan location of console in car and cable route. Keeping bends to a minimum will enhance the shift feel.
- E. Drill 5/8" diameter hole in floor for cable to exit. By inserting a drill or rod in hole and bending the sheet metal you can obtain a hole that will allow the cable to enter and exit more smoothly. After feeding the cable through, secure console in position using screws as shown in figure 3.
- F. Using screws, clamp, shim, lockwasher, and nuts, attach cable to bracket as illustrated.
- G. Attach quick-disconnect to ball joint on linkage arm.
- H. Check adjustment in each gear. By loosening lock nut and screwing the quick-disconnect either in or out, corrective adjustments can be made.

#	Description	P/N
1	Linkage Arm	3503
2	1/4-20 x 1 1/2" HHCS	7124
3	1/4" Washer	7130
4	1/4-20 Nut	7134
5	Cable Bracket	3504
6	Hardware Kit	6062



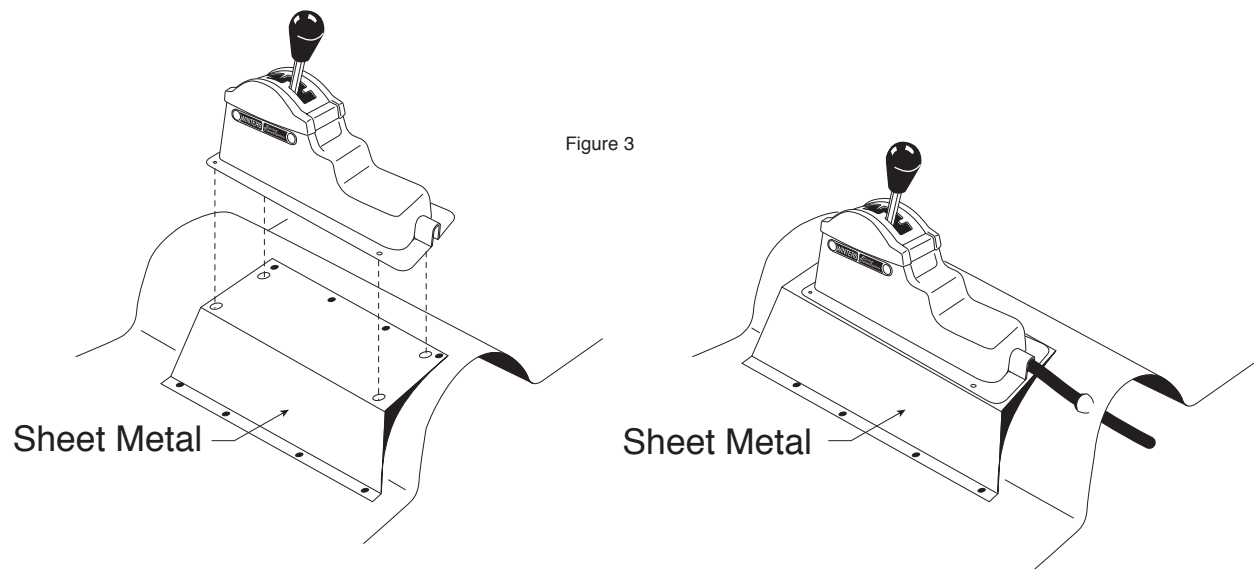


Figure 3

Illustrated above is a suggestion for tunnel-mount applications of the Winters shifter. By bending a piece of sheet metal suitable for your particular application, a flat surface will be obtained allowing your shifter to be securely fastened in the proper location. Make sure the sheet metal is of substantial gage thickness (18 or 20 ga.) or securely braced to minimize undesirable vibration.

Ford C-4 Gate Plates

