



Winters Performance Products, Inc.  
 1580 Trolley Road  
 York, PA 17408 USA  
 717-764-9844  
 www.wintersperformance.com



# Install Kit P/N 3095

## Ford C-6 Shifter

### Part Nos. 307-1, 307-1B, 307-2 and 307-2B

- A. Remove present shifting mechanism including neutral start switch.
- B. Assemble ball joint, lockwasher, and nut, to linkage arm, then push the linkage arm on the transmission linkage shaft until the arm is flush with the shaft. By tightening screw and nut, the arm will be secured in it's proper position (see figure 1).
- C. Remove two pans bolts and install the cable bracket. Ensure pan bolt length is adequate. Plan location of console in car and establish cable route. Keeping bends to a minimum will enhance the shift feel.
- D. Drill 5/8" diameter hole in floor for cable to exit. By inserting a drill or rod in hole and bending the sheet metal you can obtain a hole that will allow the cable to enter and exit more smoothly. After feeding the cable through, secure console in position using screws as shown in figure 3.
- E. Using screws, clamps, lockwasher, and nuts, attach cable to bracket as illustrated.
- F. Attach quick-disconnect to ball joint on linkage arm.
- H. Check adjustment in each gear. By loosening lock nut and screwing the quick-disconnect either in or out, corrective adjustments can be made.

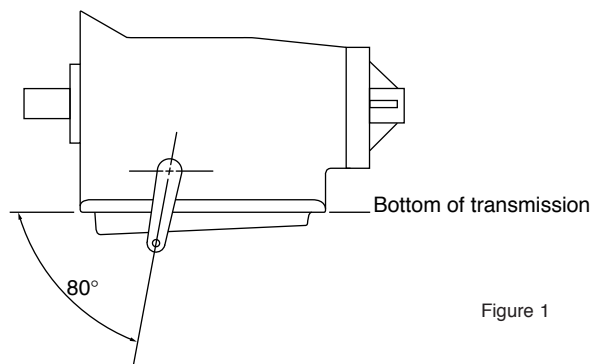
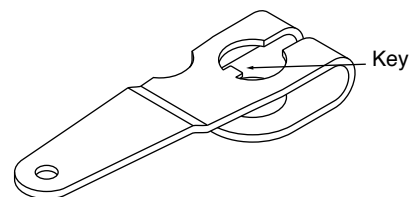
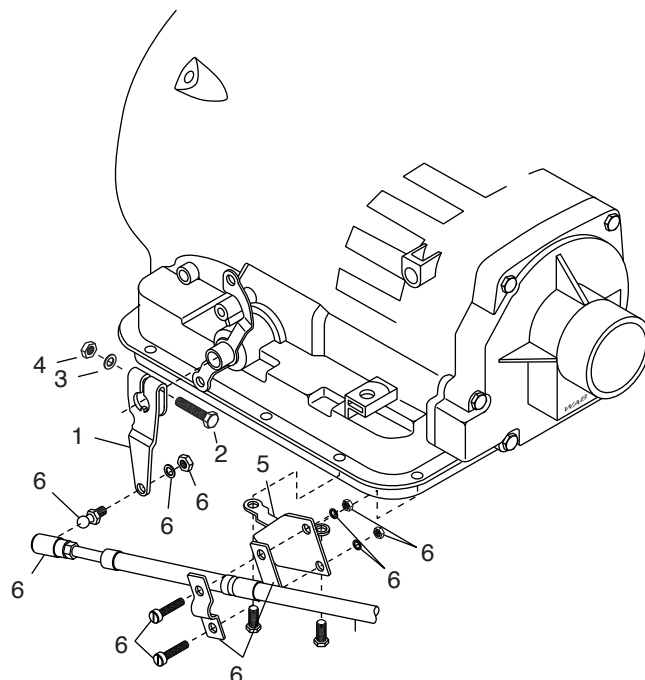


Figure 1



On some models of the Ford C-6 transmission, the linkage shaft does not have a keyway to accept the Winters linkage arm. In this case the key must be ground off (2 places). Then with the transmission in park, mount the linkage arm on the linkage shaft at an angle 80° to the bottom of the transmission and tighten.

#	Description	P/N
1	Linkage Arm	3018
2	1/4-20 x 1 1/2" HHCS	7124
3	1/4" Washer	7130
4	1/4-20 Nut	7134
5	Cable Bracket	3017
6	Hardware Kit	6062



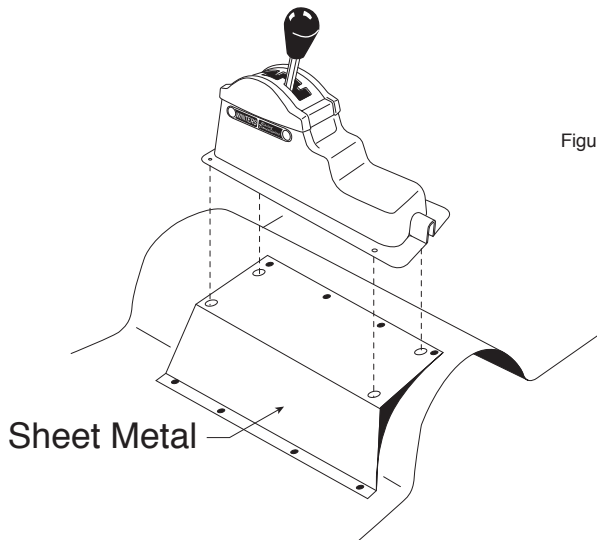
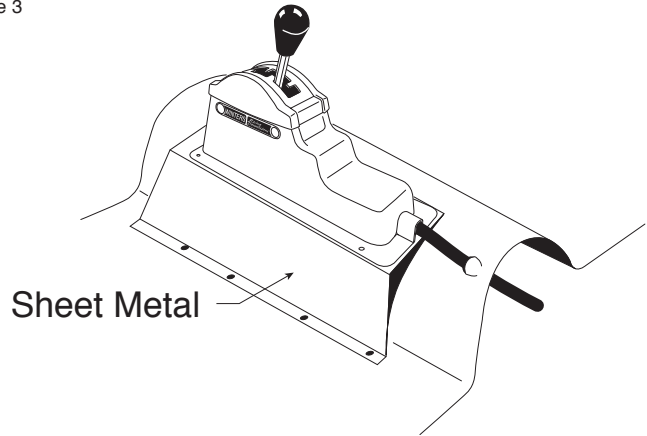


Figure 3



Illustrated above is a suggestion for tunnel-mount applications of the Winters shifter. By bending a piece of sheet metal suitable for your particular application, a flat surface will be obtained allowing your shifter to be securely fastened in the proper location. Make sure the sheet metal is of substantial gage thickness (18 or 20 ga.) or securely braced to minimize undesirable vibration.

**Ford C-6  
Gate Plates**

