



Winters Performance Products, Inc.
1580 Trolley Road
York, PA 17408 USA
717-764-9844
www.wintersperformance.com



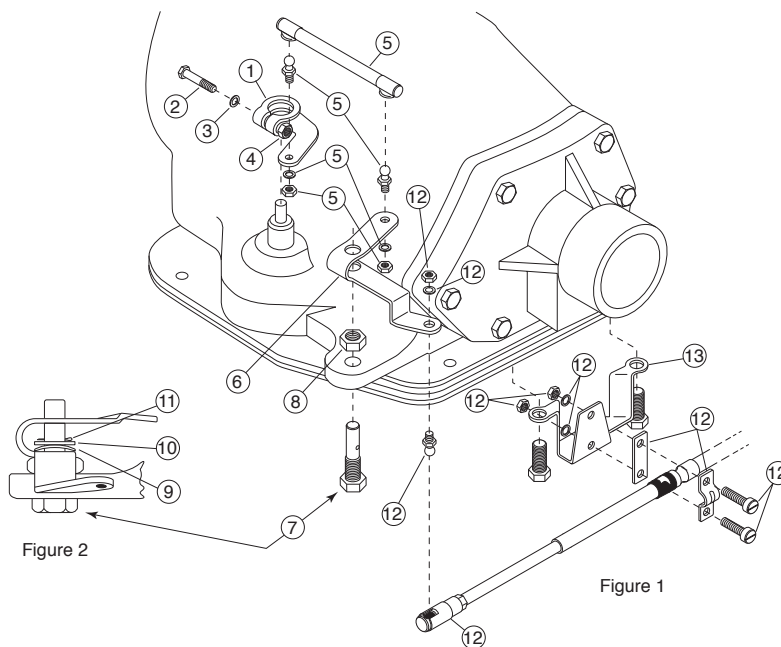
Install Kit P/N 2095

Torqueflite '8' and American Motors Shifter
Part Nos. 207-1, 207-1B, 207-2 and 207-2B

- A. Remove present shifting mechanism from transmission.
- B. Before assembling parts on transmission, assemble ball joints to linkage arm and pivot arm as shown in figure 1 using washers and nuts.
- C. Assemble linkage arm on transmission and tighten bolt.
- D. Assemble pivot arm on transmission by inserting pivot bolt through transmission pad and tightening nut. The Pivot arm can then be secured to the pivot bolt with the spring washer, flat washer, and cotter pin in position as shown in figure 2.
- E. Attach the connecting rod by pushing ends over the ball joints.
- F. Attach the ball joint to the pivot arm using lockwasher and nut.
- G. Remove two pan bolts and install cable bracket in position. Ensure pan bolt length is adequate.
- H. Plan location of console in car and cable route. Keeping bends to a minimum will enhance the shift feel.
- I. Drill 5/8" diameter hole in floor for cable to exit. By inserting a drill or rod in hole and bending the sheet metal you can obtain a hole that will allow the cable to enter and exit more smoothly. After feeding the cable through, secure console in position using screws as shown in figure 3.
- J. Using screws, clamps, lockwashers, and nuts attach cable to bracket as illustrated in figure 1.
- K. Attach quick-disconnect to ball joint on pivot arm.
- L. Check adjustment in each gear. By loosening lock nut and screwing the quick-disconnect either in or out, corrective adjustments can be made. If additional adjustment is necessary, a similar arrangement within the console is provided.

#	Description	P/N
1	Linkage Arm	2033
2	1/4-20 x 1 1/2" HHCS	7124
3	1/4" Washer	7130
4	1/4-20 Nut	7134
5	Ball Joint Assy	2024
	Nut, Hex #10-32	7136*
	Washer, Lock, #10 Split	7128*
6	Pivot Arm	2035
7	Pivot Bolt	2034
8	Jam Nut	7137
9	Wave Washer	7138
10	Flat Washer	7114
11	Cotter Pin	7139
12	Hardware Kit	6062
13	Cable Bracket	2032

* Included in P/N 2024



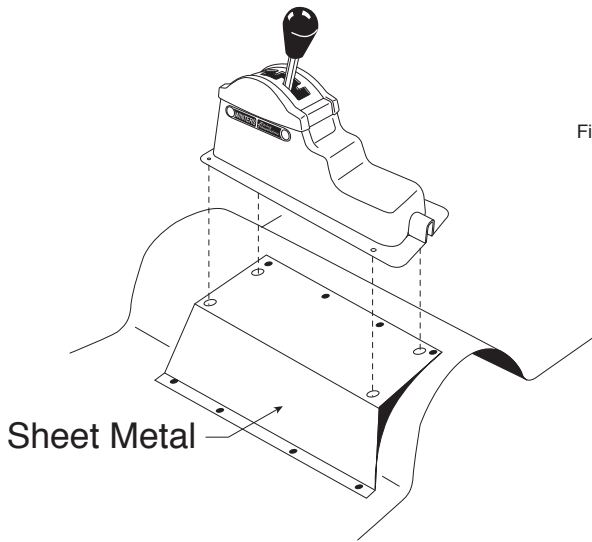
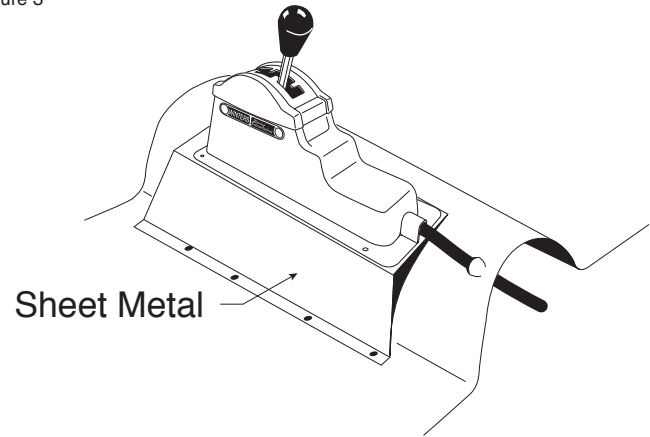


Figure 3



Illustrated above is a suggestion for tunnel-mount applications of the Winters shifter. By bending a piece of sheet metal suitable for your particular application, a flat surface will be obtained allowing your shifter to be securely fastened in the proper location. Make sure the sheet metal is of substantial gage thickness (18 or 20 ga.) or securely braced to minimize undesirable vibration.

Torqueflite '8' & American Motors Gate Plates

Standard Stock Pattern	Standard Reverse Pattern	Rock Crawler Reverse Pattern	Lock-Out Stock Pattern	Lock-Out Reverse Pattern
P/N 2027	P/N 2028	P/N 2028-1	P/N 2091	P/N 2092