



Winters Performance Products, Inc.
1580 Trolley Road
York, PA 17408 USA
717.764.9844
www.wintersperformance.com



Install Kit P/N 5595

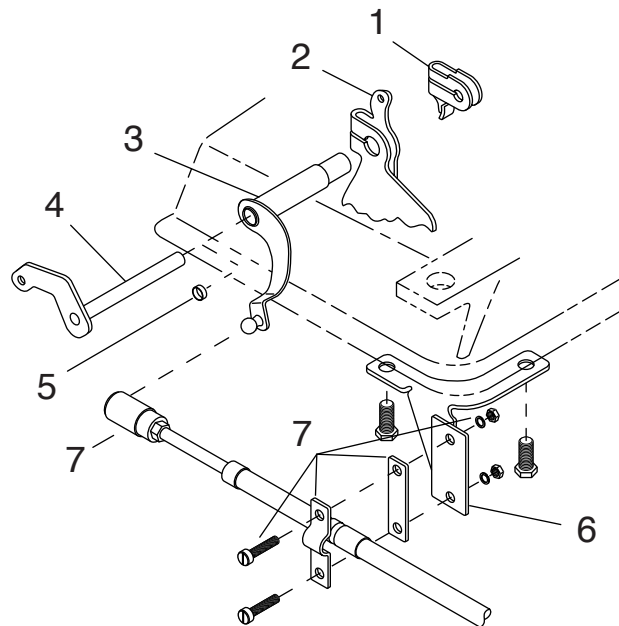
Powerglide Shifter

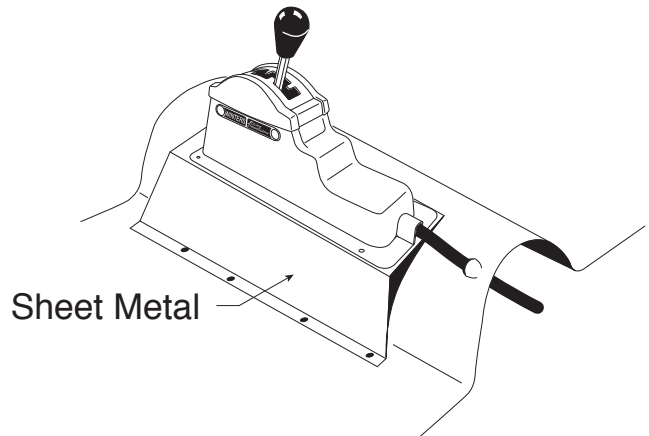
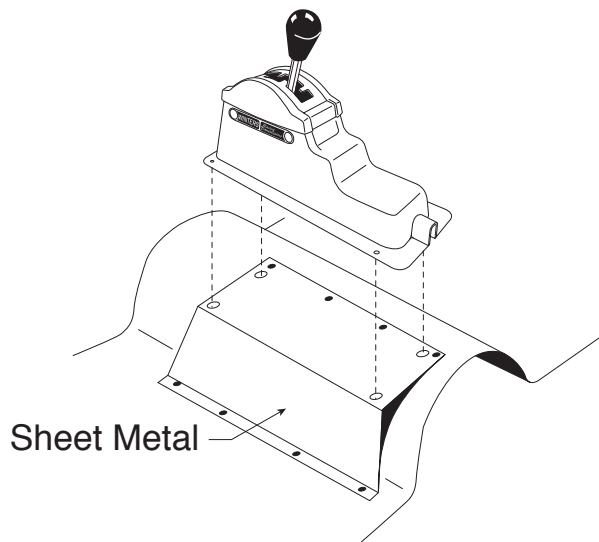
Part Nos. 507-1, 507-1B, 507-2 and 507-2B

- A. Remove present shifting mechanism from transmission.
- B. Refer to appropriate transmission service manual for procedure to drain oil, remove oil pan and disassemble stock Throttle and Manual Levers.
- C. Replace stock Outer Manual Level with Winters Outer Manual Lever. On applications not using the Throttle Lever hookup, the provided Cup Plug must be inserted in the counterbore of the Winters Outer Manual Lever to prevent fluid leakage.
- D. Before reassembling all parts to the transmission, make sure the Winters Outer Manual Lever will operate thru all detent positions without interfering with any external transmission parts.
- E. After all internal transmission components are reassembled and before all pan bolts are tightened, attach Winters Cable Bracket in position with the two left rear corner pan bolts. Ensure pan bolt length is adequate.
- F. Plan location of console in car and cable route. Keeping bends to a minimum will enhance shift feel.
- G. Drill a 5/8" diameter hole in floor for cable to exit. By inserting a drill or rod in the hole and bending the sheet metal you can obtain a hole that will allow the cable to enter and exit smoothly.
- H. Attach cable to Cable Bracket with provided hardware.
- I. Attach quick-disconnect end of cable to Outer Manual Lever.
- J. Check adjustment in each gear. By loosening lock nut and screwing the quick-disconnect either in or out, corrective adjustments can be made.

#	Description	P/N
1	Inner Throttle Lever	†
2	Inner Manual Lever	†
3	Outer Manual Lever	6123
4	Outer Throttle Lever	†
5	Cup Plug	7763
6	Cable Bracket	6126
7	Hardware Package	6062

† items marked are part of the transmission.





Illustrated above is a suggestion for tunnel-mount applications of the Winters shifter. By bending a piece of sheet metal suitable for your particular application, a flat surface will be obtained allowing your shifter to be securely fastened in the proper location. Make sure the sheet metal is of substantial gage thickness (18 or 20 ga.) or securely braced to minimize undesirable vibration.

Powerglide Gate Plates

Standard
Stock Pattern



Standard
Reverse Pattern



Lock-Out
Stock Pattern



Lock-Out
Reverse Pattern

