



Winters Performance Products, Inc.
1580 Trolley Road
York, PA 17408 USA
717.764.9844
www.wintersperformance.com

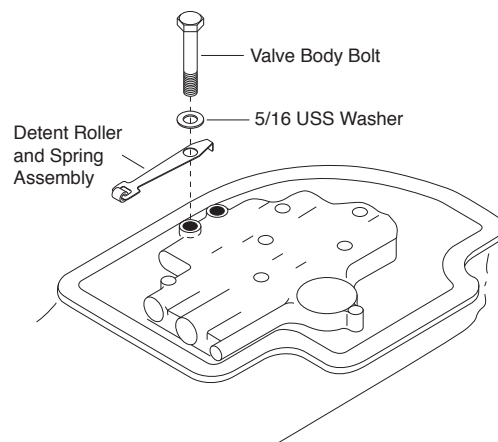


Install Kit P/N 1095

Turbo-Hydro '400' Shifter

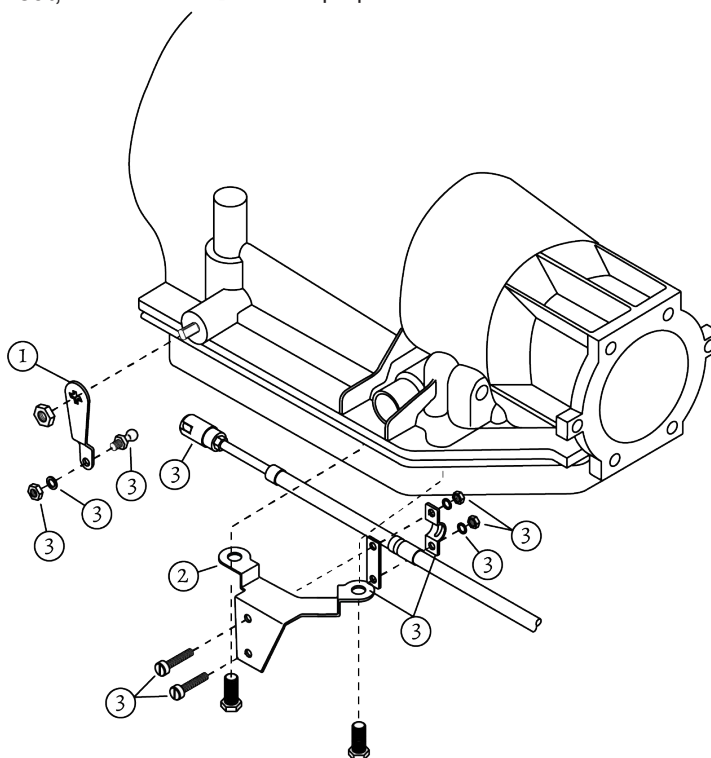
Part Nos. 107-1, 107-1B, 107-2 and 107-2B

- Remove present shifting mechanism from transmission.
- Assemble ball joint, lockwasher, and nut, to the Winters linkage arm, then remove nut and replace present arm with Winters linkage arm. When arm is on the transmission, it should bend in towards the pan with the ball joint on the inside.
- Remove two pan bolts and install cable bracket. Ensure pan bolt length is adequate.
- Plan location of console in car and cable route. Keeping bends to a minimum will enhance the shift feel.
- Drill 5/8" diameter hole in floor for cable to exit. By inserting a drill or rod in hole and bending the sheet metal you can obtain a hole that will allow the cable to enter and exit more smoothly. After feeding the cable through, secure console in position using screws as shown in figure 3.
- Using screws, clamps, lockwasher, and nuts, attach cable to bracket as illustrated.
- Attach quick-disconnect to ball joint on linkage arm. When console shift lever is in park position, the linkage arm should be all the way forward.
- Check adjustment in each gear. By loosening lock nut and screwing the quick-disconnect either in or out, corrective adjustments can be made.



The shift feel of the Turbo-Hydro '400' transmission can be greatly enhanced by placing a 5/16" USS washer between the valve body bolt and detent roller and spring assembly. To gain access to this bolt the transmission fluid must be drained and the pan removed. Please consult proper service manual for removal instructions.

#	Description	P/N
1	Linkage Arm	1037
2	Cable Bracket	1036
3	Hardware Kit	6062



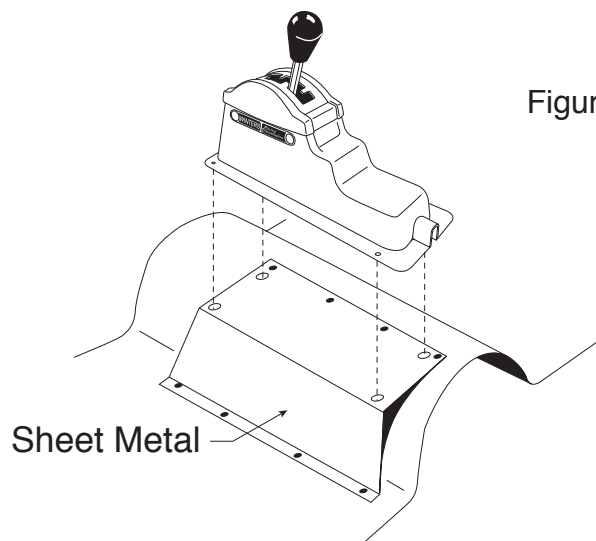
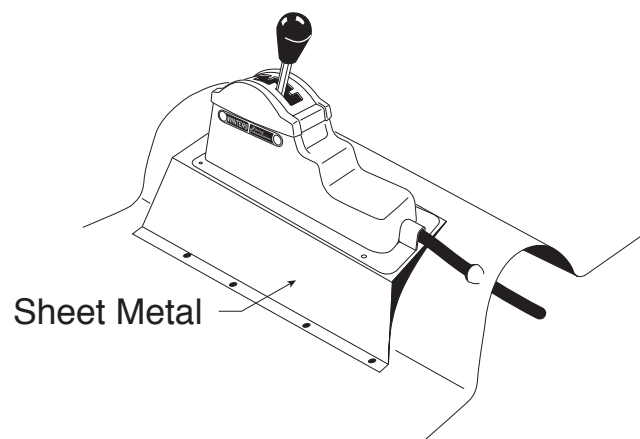


Figure 3



Illustrated above is a suggestion for tunnel-mount applications of the Winters shifter. By bending a piece of sheet metal suitable for your particular application, a flat surface will be obtained allowing your shifter to be securely fastened in the proper location. Make sure the sheet metal is of substantial gage thickness (18 or 20 ga.) or securely braced to minimize undesirable vibration.

Turbo-Hydro '400' ***Gate Plates***

