



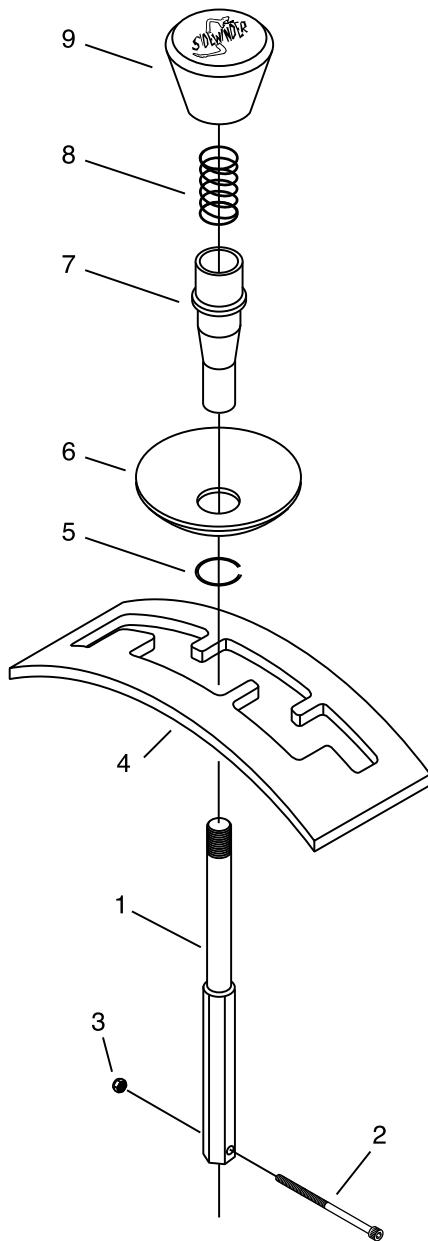
Winters Performance Products, Inc.
 1580 Trolley Road
 York, PA 17408 USA
 717.764.9844
 www.wintersperformance.com

Reverse Lock-Out Conversion Kit



Kit Part Numbers

Turbo-Hydro 350-400 Stock Shift Pattern	1490-01
Turbo-Hydro 350-400 Reverse Shift Pattern	1490-02
Torqueflite 727, 904, 999 & American Motors Stock Shift Pattern	1490-03
Torqueflite 727, 904, 999 & American Motors Reverse Shift Pattern	1490-04
Ford® C-4 & C-6 Stock Shift Pattern	1490-05
Ford® C-4 & C-6 Reverse Shift Pattern	1490-06
Powerglide Stock Shift Pattern	1490-07
Powerglide Reverse Shift Pattern	1490-08
Turbo-Hydro 700R4, 4L60E, 4L80E, Allison & Stock Shift Pattern	1490-09
Turbo-Hydro 700R4, 4L60E, 4L80E, Allison & Reverse Shift Pattern	1490-10
Ford® AODE, 4R70E, E4OD, 4R100 Stock Shift Pattern	1490-11
Ford® AODE, 4R70E, E4OD, 4R100 Reverse Shift Pattern	1490-12



- A. Remove old shaft and gate plate. Replace with new shifter shaft using #10-24 x 2 1/2" SHCS (#2) and locknut (#3).
DO NOT USE roll pin from old assembly.
- B. Install new gate plate (#4).
- C. Install lock-out sleeve assembly (#'s 5, 6, & 7). This sleeve must slide freely on the shifter shaft.
- D. Install spring (#8) and then shifter knob (#9). After knob is in place, recheck the movement of the lock-out sleeve. It must slide freely on the shifter shaft.

#	Description	P/N	Qty
1	Shifter Shaft	1097	1
2	#10-24 x 2 1/2" SHCS	7967	1
3	#10-24 Nylon Locknut	7968	1
4	Gate Plate		1
	Turbo-Hydro Stock Pattern	1091	
	Turbo-Hydro Reverse Pattern	1092	
	Torqueflite Stock Pattern	2091	
	Torqueflite Reverse Pattern	2092	
	Ford® Stock Pattern	3091	
	Ford® Reverse Pattern	3092	
	Powerglide Stock Pattern	5583	
	Powerglide Reverse Pattern	5584	
	TH 700R4 Stock Pattern	4014	
	Ford® AODE Stock Pattern	3287	
5	Snap Ring	7670	1
6	Collar	1094	1
7	Lockout Sleeve	1093	1
8	Lockout Spring	1098	1
9	Shifter Knob	1096	1