

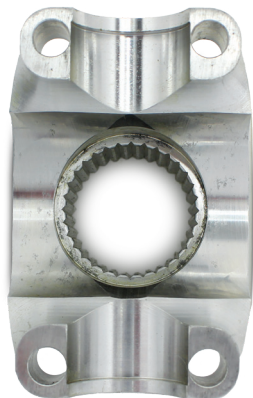


# ALUMINUM YOKE, 32-SPLINE

P/N 5038AS-32

1580 Trolley Road  
York, PA 17408 USA  
717.764.9844

[www.wintersperformance.com](http://www.wintersperformance.com)



Must use seal P/N  
7204-32-01 (included)

Machined from high strength 7075-T6 aluminum, this yoke is fitted with a stainless steel sleeve at seal contact area. Uses series 1310 (1-1/16") joint. **NOTE:** Use seal P/N 7204-32-01