



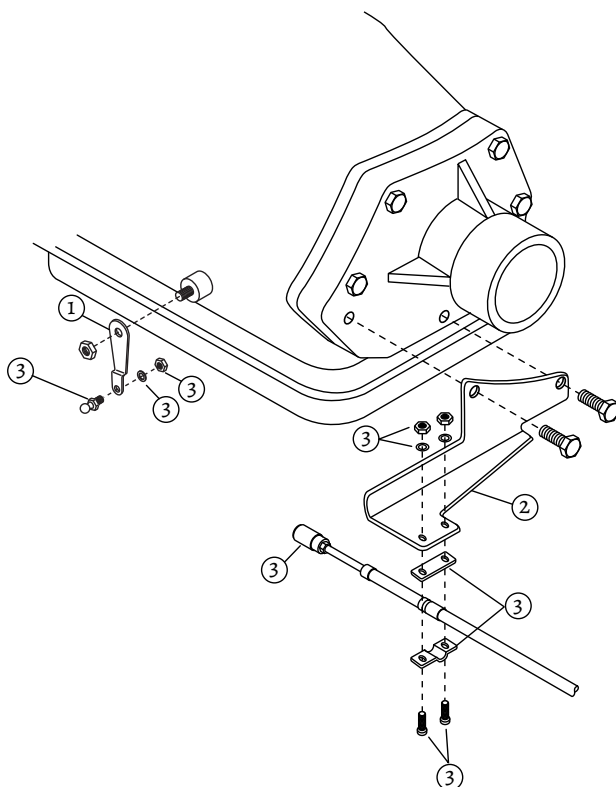
Winters Performance Products, Inc.  
1580 Trolley Road  
York, PA 17408 USA  
717-764-9844  
www.wintersperformance.com



## Install Kit P/N 1195

Allison® LCT1000, 2000 & 2400 Shifter  
Part Nos. 197-1 & 197-1B

- A. Remove present shifting mechanism from transmission.
- B. Assemble ball joint, lockwasher, and nut, to the Winters® linkage arm, then remove nut and replace present arm with Winters® linkage arm. When arm is on the transmission, it should bend away from the pan with the ball joint on the outside.
- C. Remove two rear cover bolts and install cable bracket. Ensure cover bolt length is adequate.
- D. Plan location of console in car and cable route. Keeping bends to a minimum will enhance the shift feel.
- E. Drill 5/8" diameter hole in floor for cable to exit. By inserting a drill or rod in hole and bending the sheet metal, you can obtain a hole that will allow the cable to enter and exit more smoothly. After feeding the cable through, secure console in position using screws as shown in figure 3.
- F. Using screws, clamps, lockwasher, and nuts, attach cable to bracket as illustrated.
- G. Attach quick-disconnect to ball joint on linkage arm. When console shift lever is in park position, the linkage arm should be all the way forward.
- H. Check adjustment in each gear. By loosening lock nut and screwing the quick-disconnect either in or out, corrective adjustments can be made. If additional adjustment is necessary, a similar arrangement within the console is provided.



#	Description	P/N
1	Linkage Arm	4011
2	Cable Bracket	4977
3	Hardware Kit	6062

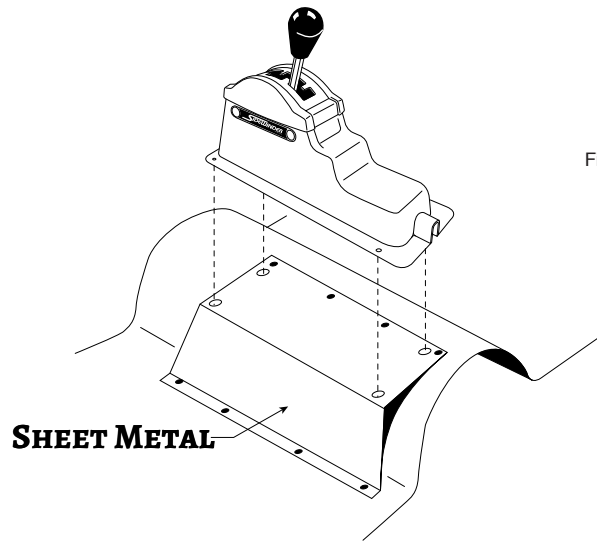
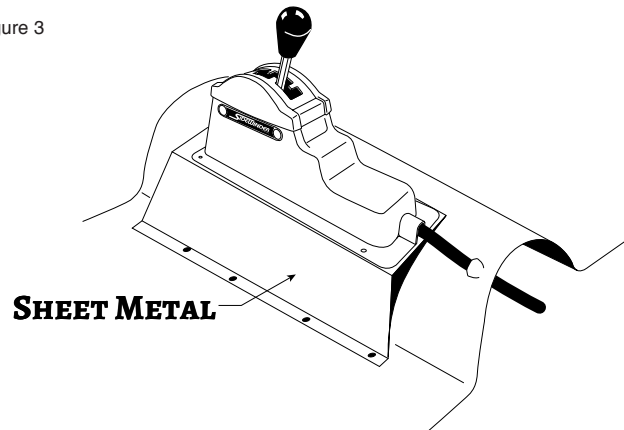


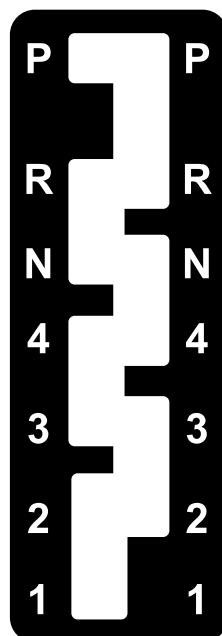
Figure 3



Illustrated above is a suggestion for tunnel-mount applications of the Winters shifter. By bending a piece of sheet metal suitable for your particular application, a flat surface will be obtained allowing your shifter to be securely fastened in the proper location. Make sure the sheet metal is of substantial gage thickness (18 or 20 ga.) or securely braced to minimize undesirable vibration.

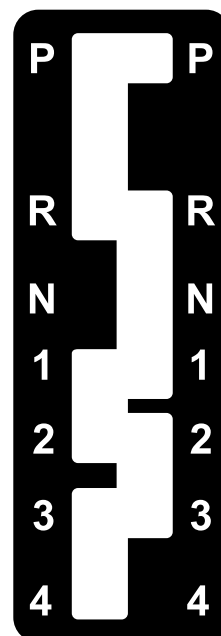
### **Allison® LCT1000, 2000 & 2400 Gate Plates**

Standard  
Stock Pattern



**P/N 4013**

Lock-Out  
Stock Pattern



**P/N 4013-1**