

7" QUICK CHANGE

TRACKSTAR

STOCK CAR

CLOSED TUBE

8" QUICK CHANGE

1 TON
ASPHALT MOD

DIRT MOD

10" QUICK CHANGE

LATE MODEL

NON QUICK CHANGE



WIDE 5

**DIRT MODIFIED
QUICK CHANGE ASSEMBLIES**
Catalog #WP7, Volume 3

10" SPRINT CENTER

**THE MOST
ADVANCED
QUICK CHANGE AVAILABLE**

ASSEMBLIES

P/N 5270 - Wide 5

6 BOLT COVER

Option 8133-10-6

*Spindles not included in rear assembly.

*These assemblies are also available with magnesium castings. When ordering a magnesium assembly, add prefix 'K' to the P/N (Example K5270)



4.86 Ring & Pinion Standard

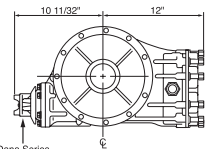
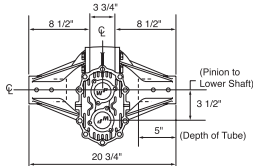
**Shown with Option 8208,
8252B & 8186P**

10" RING GEAR - 12 BOLT

Often imitated, never duplicated! Winters 10" Sprint Center Quick Change is the best of the best! Factory built with the finest materials inside and out. This go to rear is the standard of the industry. Dollar for dollar, pound for pound, no other rear comes close!

Available options provide combinations to suit many applications. Available in magnesium and aluminum. Order closed tube assembly part number with Option 8133 to specify Sprint Center. Every Sprint Center rear is built with Option 8104 Posi-Lock, Option 8143 Pinion Nose Roller Bearing, and Option 8115 31 Spline Aluminum Spool.

DIMENSIONAL DATA



Option 8254-TIM Timken® Pinion Cup & Cones

The REM® Process, used in finishing gears, increases performance by virtually eliminating gear friction and wear, also reducing oil temperature. Nothing comes close to being as friction free.

P/N 8218-RP
(Ring & Pinion)

P/N 8218-LS
(Lower Shaft)

P/N 8218-BRG
(Bearings)

OPTIONS

Options shown in Blue are Popular Options

Options highlighted in Yellow are Low Drag Options

CENTER OPTIONS

8104	Pinion Posi-Lock Assembly
8106	Heat Treated Lower Shaft
8111	4.12 Ring & Pinion
8126	Titanium Thrubolts
8133	Sprint Center, 10 Bolt
8133-10-6	Sprint Center, 6 Bolt
8137	Heavy Duty Gear Cover
8143	Pinion Nose Roller Bearing
8182B	Aluminum Drive Yoke
8184	HT Gundrilled Lower Shaft
8199	Viton Seal, Seal Plate
81486	Spread Bearing 4.86 Ring & Pinion
81457	4.57 Ring & Pinion
8202-XXX	EDM Ring Gear (specify ratio)
8208	Thermal Dispersant Coating
8218-RP	REM® Ring & Pinion
8218-BRG	REM® Bearing (# is per Bearing)
8244S-P	Low Drag Brgs, Pinion, Steel
8252	Big Brg. Gear Cover w/ Retainers
8252B	Billet BB Gear Cover w/ Retainers
8254-TIM	Bearing, Timken®, Cup & Cones
8268	Solid Seal Plate
8275	1350 Series Yoke
8298	Low Drag Carrier Seals
8299	Gundrilled Pinion Shaft

DIFFERENTIAL OPTIONS

8121W	Winters Track
8130	Ultralight Alum. Spool
8171	Aluminum Locker
8171L	L. W. Alum. Locker
8183	Aluminum Triple Track
8231-01	Track Star
8244S-CT	Low Drag Brgs, Differential, Steel
BELL OPTIONS	
8136P	Lightweight 4 Rib Bell w/ Insp. Plug
8155P	Heavy Duty 8 Rib Bell w/ Insp. Plug
8155PM	Lightweight 8 Rib Bell w/ Insp. Plug
8155PMHD	Heavy Duty 8 Rib Bell, Perm. Mold
8186P	L. W. 6 Rib Bell w/ Insp. Plug
TUBE OPTIONS	
8132*	Alum. 8 Bolt Tubes (Thick Flg/Modified)
8138	Aluminum Tubes w/ Steel Spindles
8140	One Piece Aluminum Tubes
8140-1TON	Wide 5 Aluminum Tubes, 1 Ton
8181L	Camber, Specify Up or Down
8181R	Camber, Specify Up or Down
8201	Internal Aluminum Tube Seal
8237	Tube & Bell Locknut Assy., 4 & 6 Rib
8237-8	Tube & Bell Locknut Assy., 8 Rib
8239**	2 7/8" Aluminum Tubes
8263**	2 7/8" Steel Tubes
9117	2 7/8" Tubes with Spacers

*Spindles not included.

**Order Option 9117 (2 7/8" Spacers)

10" SPRINT CENTER

Sold Separately



#6 AN Fitting

P/N 2966-02
Breather Assembly to be used with 6 Bolt Cover Option.

6 BOLT COVER

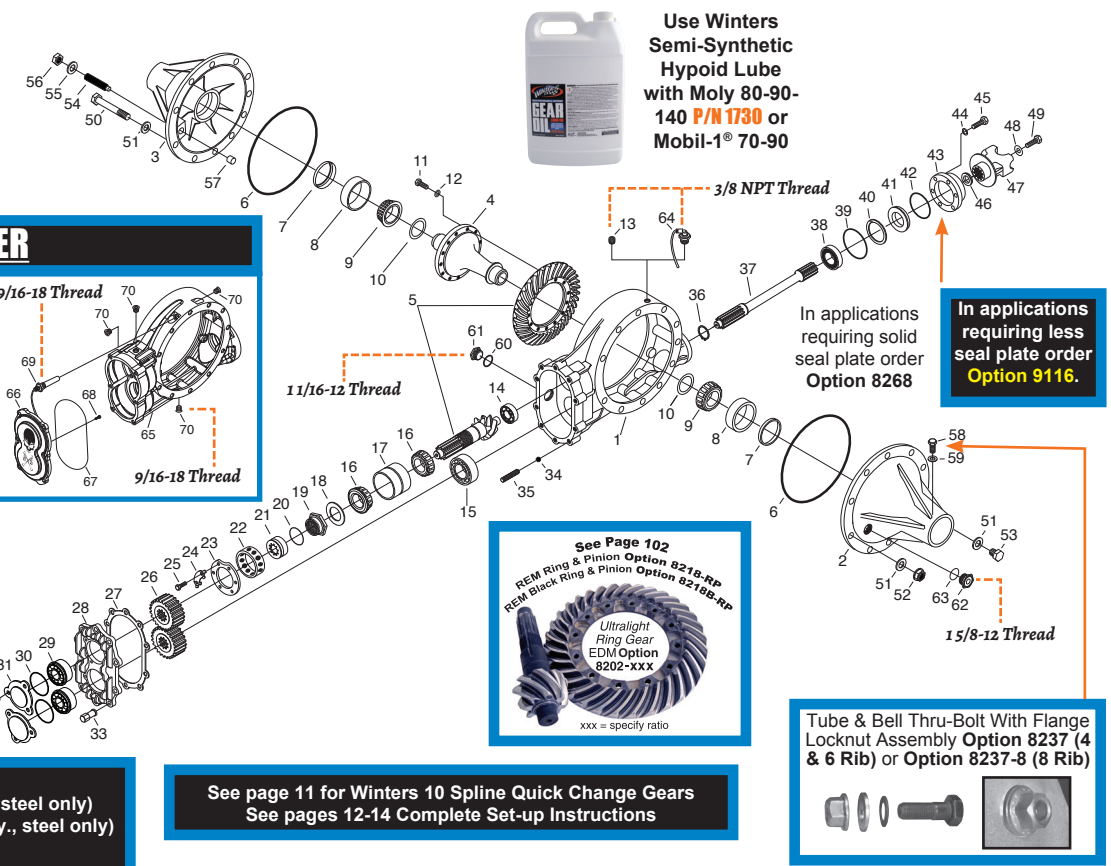


P/N 12793-01

Shown with Option 8208, 8133-10-6 & 8155PMHD

ARP® RING GEAR BOLT KIT
KIT P/N 9381
Option 9147 Installed in Rear

Longer Thrubolts Available
Option 8249 6" Thrubolt (specify qty., steel only)
Option 8249L 6 1/2" Thrubolt (specify qty., steel only)



See page 11 for Winters 10 Spline Quick Change Gears
See pages 12-14 Complete Set-up Instructions

#	DESCRIPTION	P/N	QTY
1*	Aluminum "Sprint" Center Section	5840	1
2*	Aluminum 6 Rib Right Side Bell	1663-01B	1
3*	Aluminum 6 Rib Left Side Bell	1663-02	1
4*	31 Spline Aluminum Spool	5034-11A	1
5*	4.86 Ratio Ring & Pinion, Standard	5400	1
6*	O'Ring, 8 Rib Bell	7403	2
6*	O'Ring, 4 & 6 Rib Bell	7403T	2
7*	Seal, Side Bell	7205	2
7*	Seal, Side Bell, Viton	7283V	2
8*	Bearing Cup, Side Bell	7310	2
9*	Bearing Cone, Steel Spools & Differentials	7309	2
9*	Bearing Cone, Aluminum Spools & Differentials	7340	2
10*	Shim Kit, Steel Spools & Differentials	5097	1
10*	Shim Kit, Aluminum Spools & Differentials	5295	1
11	Ring Gear Bolt, Threaded Ring Gear	7852	12
12	3/8" Belleville Washer, Threaded Ring Gear	7815	12
13	3/8" Recessed Socket Head Pipe Plug	7111B	2
14	Roller Bearing, Pinion Nose	7331	1
15	Shielded Ball Bearing, Lower Shaft	7339	1
16*	Bearing Cone, Pinion Shaft	7308	2
17*	Double Bearing Cup, Pinion Shaft	7307	1
18	Bearing Washer	5055	1
19	Posi-Lock Nut, Pinion Shaft	6485R	1
20	O'Ring, Posi-Lock	7445	1
21	Posi-Lock Retainer, Pinion Shaft	6484	1
22	Retaining Ring, Pinion	5020	1
23	Retaining Plate, Pinion	6296A	1
24	Lock Tab	2374	3
25	3/8-16 x 1" HHCS, Retaining Plate	7110	6
26	Quick Change Gear Set (Not Included)	8500	1
27*	Gasket, Gear Cover	6729	1
28*	Gear Cover, Less Bearings	6655HD	1
29*	Ball Bearing, Gear Cover	7521	2
30*	O'Ring, Bearing Cap	7406	2
30A*	Back-up Ring, O'Ring	7496	2
31*	Bearing Cap	1667	2
32*	1/4-20 x 1" SHCS	7955	6
33	3/8-16 Aluminum High Nut	7794AS	10
34	5/16" Diameter Ball, Gear Cover	7398	10
35*	3/8-16 x 1 3/4" Stud, Gear Cover	7802	10
36	Retaining Ring, Lower Shaft	7610	1
37*	Standard Lower Shaft	5003-02	1
37*	Option, Gundrilled, Open Drive Lower Shaft	1550	1
38	Front Ball Bearing, Lower Shaft	7390	1

#	DESCRIPTION	P/N	QTY
39	O'Ring, Seal Plate	7413	1
40*	Retaining Ring, Seal Plate, .375" Seal	7653	1
40*	Retaining Ring, Seal Plate, .750" Seal	7652	1
41*	Seal, Seal Plate, .375" Thin Seal	7204	1
41*	Seal, Seal Plate, .750" Thick Seal	7204T	1
41*	Seal, Seal Plate, .750" Viton Seal	7204V	1
42	O'Ring, Seal	7474	1
43	Seal Plate, .750" Seal	5018-01M	1
44	3/8" SAE Flatwasher	7114	6
45*	3/8-16 x 1" HHCS, Seal Plate	7110	6
45*	3/8-16 x 1 1/4" HHCS, Seal Plate	7107	6
46*	Spacer, Drive Yoke (Not used with 3533)	6532	1
47*	Drive Yoke, Steel, 1310 Series	5038	1
47*	Drive Yoke, Steel, Threaded, 1310 Series	5038B	1
47*	Drive Yoke, Billet Aluminum, 1310 Series	5038AS	1
47*	Drive Yoke, Billet Aluminum, 32 Spline	5038AS-32	1
47*	Drive Yoke, Steel with Integral Spacer	3533	1
48	Retaining Washer, Drive Yoke	5037	1
49	3/8-24 x 1" HHCS, Drive Yoke	7109Y	1
50*	7/16-20 x 5 1/2" Thrubolt	7176	10
51	7/16" SAE Flatwasher, Thrubolt	7178	22
52	7/16-20 Flanged Locknut, Thrubolt	7177	10
53	7/16-14 x 1 1/4" HHCS	7117	2
54*	1/2-13 Adjusting Screw, 8 Rib Side Bell	7155	1
54*	1/2-13 Adjusting Screw, 4 & 6 Rib Side Bell	6149	1
55	1/2" SAE Flatwasher, Adjusting Screw	7167	1
56	1/2-13 Jam Nut, Adjusting Screw	7137	1
57	Thrustblock, Adjusting Screw	5010	1
58*	3/8-24 x 1" HHCS, 4 Rib Side Bell	7109	16
58*	3/8-24 x 3/4" HHCS, 6 & 8 Rib Side Bell	7109S	12
59	3/8" SAE Flatwasher	7114	16
60	O'Ring, Inspection Plug	7454	1
61	Inspection Plug	3643	1
62	Inspection Plug, Side Bell	3261	1
63	O'Ring, Inspection Plug, Side Bell	7453	1
64	Top Mount Breather	2966T	1

6 BOLT COVER

#	DESCRIPTION	P/N	QTY
65	Magnesium Center Section	K12088	1
66	Billet Aluminum 6 Bolt Gear Cover	12175	1
67*	O'Ring, Billet Aluminum 6 Bolt Gear Cover	8447	1
67*	Gasket, Billet Aluminum 6 Bolt Gear Cover	12185	1
68	#10-24 x 1/2" FHCS Bearing Retainer	12417	2
69	Breather Assembly (Sold Separately)	2966-02	1

* Part Numbers in this list may vary depending on options ordered at time of purchase. Please check the assembly tag included with your rear.

8" 4.11 RING & PINION IN A FULL SIZE 10" HOUSING

HARNESS THE POWER OF YOUR CRATE ENGINE

ASSEMBLIES

P/N 5270 - Wide 5

To order any Full Size 10" Quick Change or Center Kit with an 8" Ring Gear add the following Options:

2ND GENERATION

Option 8111-8S 4.11 Ring & Pinion Short
Option 8133-8S Sprint Center Short

6 BOLT COVER

Option 8111-8S 4.11 Ring & Pinion Short
Option 8133-8S-6 Sprint Center Short



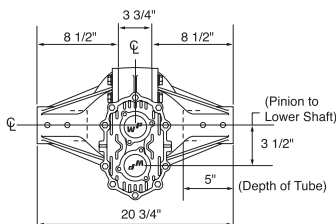
Shown with Option 8133-8S, 8208, 8252B & 8155PMHD

8" RING GEAR - 12 BOLT LIGHT YEARS AHEAD OF THE COMPETITION!

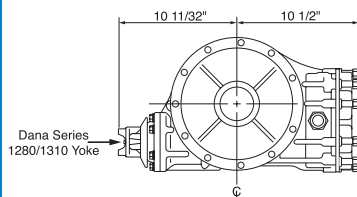
Want Real Low Drag? Stick This In Your Car!

Although appearances may be deceiving, this full size quick change uses a New 8" Ring Gear that is 20% smaller and 20% lighter, reducing flywheel weight and unsprung weight. From a performance standpoint, this 8" Ring Gear will accelerate and de-accelerate quicker than a 10" Ring Gear. All cars will benefit, although lower horsepower cars can expect more gain than higher horsepower cars. **All Low Drag Bearing & Seal Options Available!**

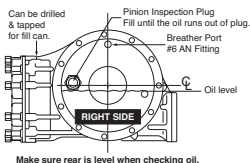
DIMENSIONAL DATA



2ND GENERATION



IMPORTANT



Use Winters Semi-Synthetic Hypoid Lube with Moly 80-90-140 **P/N 1730** or Mobil-1® 70-90

PROPER OIL LEVEL IS CRITICAL

Always maintain oil level at 1/2" (3.5 qt, 3.31 liters) below axle center line.

OPTIONS

Options shown in Blue are Popular Options
 Options highlighted in Yellow are Low Drag Options

CENTER OPTIONS

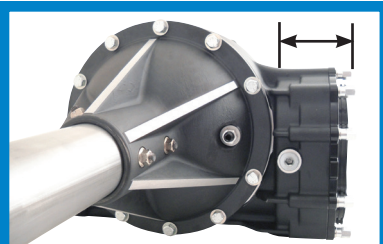
8104	Pinion Posi-Lock Assembly
8106	Heat Treated Lower Shaft
8111-8S	4.12 Ring & Pinion Short
8126	Titanium Thrubolts
8133-8S	Sprint Center Short, 10 Bolt
8133-8S-6	Sprint Center Short, 6 Bolt
8137	Heavy Duty Gear Cover
8182B	Aluminum Drive Yoke
8184	HT Gundrilled Lower Shaft
8199	Viton Seal, Seal Plate
8202-V8	EDM Ring Gear (specify ratio)
8208	Thermal Dispersant Coating
8218-RP	REM® Ring & Pinion
8218-BRG	REM® Bearing (# is per Bearing)
8252	Big Brg. Gear Cover w/ Retainers
8252B	Billet BB Gear Cover w/ Retainers
8268	Solid Seal Plate
8275	1350 Series Yoke
8298	Low Drag Carrier Seals
8299	Gundrilled Pinion Shaft
DIFFERENTIAL OPTIONS	
8115	Aluminum Spool
8121W	Winters Track
8130	Ultralight Alum. Spool
8171	Aluminum Locker

*Spindles not included.

8171L	L. W. Alum. Locker
8183	Aluminum Triple Track
8231-01	Track Star
8244S-CT	Low Drag Brgs, Differential, Steel
BELL OPTIONS	
8136P	Lightweight 4 Rib Bell w/ Insp. Plug
8155P	Heavy Duty 8 Rib Bell w/ Insp. Plug
8155PM	Lightweight 8 Rib Bell w/ Insp. Plug
8155PMHD	Heavy Duty 8 Rib Bell, Perm. Mold
8186P	L. W. 6 Rib Bell w/ Insp. Plug
TUBE OPTIONS	
8132*	Alum. 8 Bolt Tubes (Thick Flg/Modified)
8138	Aluminum Tubes w/ Steel Spindles
8140	One Piece Aluminum Tubes
8181L	Camber, Specify Up or Down
8181R	Camber, Specify Up or Down
8201	Internal Aluminum Tube Seal
8237	Tube & Bell Locknut Assy., 4 & 6 Rib
8237-8	Tube & Bell Locknut Assy., 8 Rib
8239**	2 7/8" Aluminum Tubes
8263**	2 7/8" Steel Tubes
9117	2 7/8" Tubes with Spacers
9119**	2 7/8" Tetrad Tubes
9125	One Piece Aluminum Tubes, 1 Ton

**Order Option 9117 (2 7/8" Spacers)

8" 4.11 RING & PINION IN A FULL SIZE 10" HOUSING



2ND GENERATION
SHORT GEAR CAVITY INCREASES
FUEL CELL CLEARANCE 1 1/2"



Ultralight Ring Gear EDM Option 8202-V8
Weighs 5.75 lbs

Sold Separately



P/N 2966-02
Breather Assembly to be used with 6 Bolt Cover Option.



Use Winters Semi-Synthetic Hypoid Lube with Moly 80-90-140 P/N 1730

ARP® RING GEAR BOLT KIT
KIT P/N 9381
Option 9147 Installed in Rear



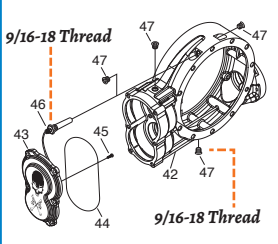
P/N 65411SB-CT
(4.11 RING AND PINION W/ BEARINGS)

For Pinion Nose Support add Option 8143-8S when ordering

6 BOLT COVER

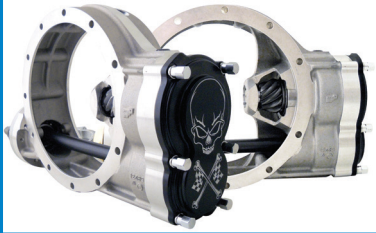


Add option 9145 for No Logo Cover.



Shown with Option 8208, 8133-8S-6 & 8155PMHD

6 BOLT CENTER WITH PINION BEARING SUPPORT



Option 9139

The new Full Size Rear with 8" Ring Gear is no longer just for limited horsepower cars! The addition of a Pinion Bearing Support takes this rear to a whole new level. This dedicated Dirt & Asphalt Rear is only available for use with a 31 Spline Aluminum Spool. The Skull & Cross Bones 6 Bolt Billet Cover is a standard option on this new model. With the exception of being able to use a Differential in this rear, all current options are available.



P/N 6170 Aluminum
P/N K6170 Magnesium
The center kit retrofits into all existing full size quick change rears. Use your tubes, side bells and quick change gears and replace your 10" ring gear with our new 8" ring gear, which bolts to your carrier (spool, Trackstar, Locker, etc.).

NOTE: Aluminum spool shown is not included in center section kit.

#	DESCRIPTION	P/N	QTY
1	Aluminum "Sprint" Center Section	4949	1
2*	4.11 Ratio Ring & Pinion, Standard	65411S	1
3	3/8" Recessed Socket Head Pipe Plug	7111B	2
4	Shielded Ball Bearing, Lower Shaft	7339	1
5	Bearing Cone, Pinion Shaft	7308	1
5A	Bearing Cone, Pinion Shaft	7527	1
6	Double Bearing Cup, Pinion Shaft	4871	1
7	Bearing Race, Pinion	8622	1
8	Bearing Washer	5055	1
9	Posi-Lock Nut, Pinion Shaft	1806	1
10	O'Ring, Posi-Lock	7455	1
11	Posi-Lock Retainer, Pinion Shaft	1807	1
12	Lock Tab	12042	1
13	Bearing Retainer	12026	1
14	Lock Tab	12043	1
15	3/8-16 x 1 1/4" HHCS	7107	6
16	Quick Change Gear Set (Not Included)	8500	1
17	1/4-20 x 1/2" BHCS	8087	6
18	Bearing Retainer	3258	1
19	Ball Bearing, Gear Cover	8659	2
20	O'Ring, Gear Cover	8478	1
21	Billet Aluminum Gear Cover	4873	1
22	3/8-16 Aluminum High Nut	7794AS	10
23*	3/8-16 x 1 3/4" Stud, Gear Cover	7802	10
24	5/16" Diameter Steel Ball, Gear Cover	7398	10
25	Retaining Ring, Lower Shaft	7610	1
26	Standard Lower Shaft	4951	1
27	Front Ball Bearing, Lower Shaft	7390	1
28	O'Ring, Seal Plate	7413	1

#	DESCRIPTION	P/N	QTY
29*	Retaining Ring, Seal Plate, .375" Seal	7653	1
29*	Retaining Ring, Seal Plate, .750" Seal	7652	1
30*	Seal, Seal Plate, .375" Thin Seal	7204	1
30*	Seal, Seal Plate, .750" Thick Seal	7204T	1
30*	Seal, Seal Plate, .750" Viton Seal	7204V	1
31	O'Ring, Seal	7474	1
32	Seal Plate, .750" Seal	5018-01ML	1
33	3/8" SAE Flatwasher	7114	6
34*	3/8-16 x 1" HHCS, Seal Plate	7110	6
34*	3/8-16 x 1 1/4" HHCS, Seal Plate	7107	6
35*	Spacer, Drive Yoke (Not Used with 3533)	6532	1
36*	Drive Yoke, Steel, 1310 Series	5038	1
36*	Drive Yoke, Steel, Threaded, 1310 Series	5038B	1
36*	Drive Yoke, Billet Aluminum, 1310 Series	5038AS	1
36*	Drive Yoke, Billet Aluminum, 32 Spline	5038AS-32	1
36*	Drive Yoke, Steel with Integral Spacer	3533	1
37	Retaining Washer, Drive Yoke	5037	1
38	3/8-24 x 1" HHCS, Drive Yoke	7109Y	1
39	Inspection Plug	3643	1
40	O'Ring, Inspection Plug	7454	1
41	Top Mount Breather	2966T	1
6 BOLT COVER			
42	Magnesium Center Section	K12068	1
43	Billet Aluminum 6 Bolt Gear Cover	12070	1
44	O'Ring, Billet Aluminum 6 Bolt Gear Cover	8446	1
45	#10-24 x 1/2" FHCS, Bearing Retainer	12417	2
46	Breather Assembly (Sold Separately)	2966-02	1

* Part Numbers in this list may vary depending on options ordered at time of purchase. Please check the assembly tag included with your rear.

3" SIDE TUBES & SPINDLES

2 7/8" WIDE 5



Option 9119

Shown with REQUIRED Tube Spacer P/N 3262.
MUST USE Seal P/N 7289V with Tube Spacer.

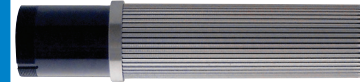
.280 Wall Thickness

#	DESCRIPTION	CAMBER	P/N ASSEM	P/N SPINDLE	P/N TUBE
1*	2 7/8" Tetrad Tube	Straight	3246T	One Piece	One Piece
2	2 7/8" Aluminum Side Tube	Straight	3246	One Piece	One Piece
2	2 7/8" Steel Side Tube	Straight	3791	One Piece	One Piece

*Must Use Tube



Option 8239
Aluminum

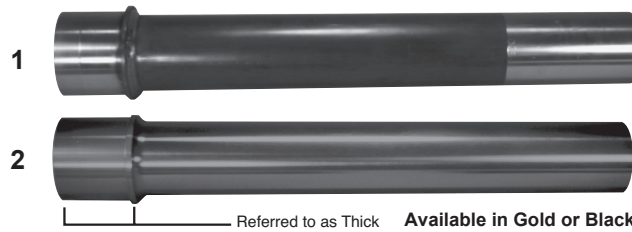


Add Option 1/2 8238
for Splined Tube

NOTE: Seal P/N 7289V is Required When Using Tube Spacer P/N 3262 (Tube Spacer O'Ring P/N 7490).

8 BOLT TUBE THICK FLANGE

SPINDLE BOLTS
8 Bolt Thick Flange
P/N 7873
Steel Tube
P/N 774
Aluminum Tube



Referred to as Thick Available in Gold or Black

Option 8132
Aluminum 8 Bolt Tubes
(Spindles Not Included)

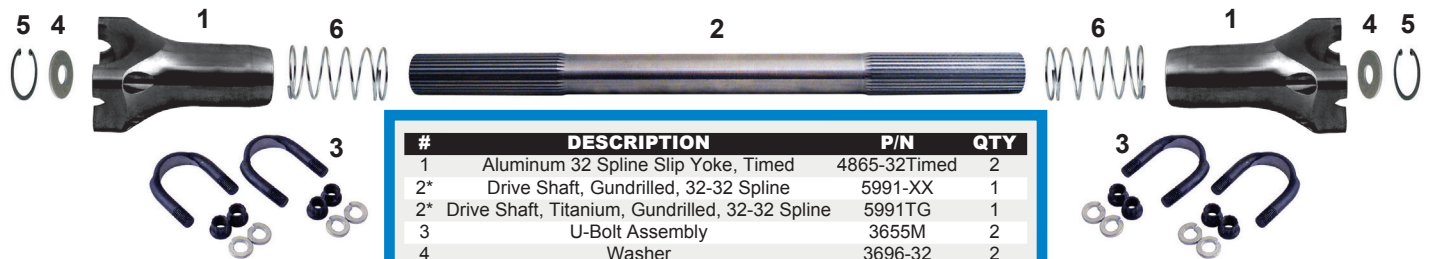
#	DESCRIPTION	P/N ASSEM	P/N TUBE END	P/N TUBE
1	8 Bolt Wide 5 Steel Tube Assembly for Bearing Mount, Thick Flange	6577	6560	5110
2	8 Bolt Wide 5 Aluminum Tube Assembly for Bearing Mount, Thick Flange	6603	One Piece	One Piece

WIDE 5

#	DESCRIPTION	CAMBER	P/N ASSEM	P/N SPINDLE	P/N TUBE
1	Wide 5 Aluminum Tube with Steel Spindle	Straight	6631	6598	6597
1	Wide 5 Aluminum Tube with Steel Spindle	0.5°	1405A	1379-05	6597
1	Wide 5 Aluminum Tube with Steel Spindle	1.0°	1410A	1379-10	6597
1	Wide 5 Aluminum Tube with Steel Spindle	1.5°	1415A	1379-15	6597



DIRT MODIFIED DRIVE LINE



#	DESCRIPTION	P/N	QTY
1	Aluminum 32 Spline Slip Yoke, Timed	4865-32Timed	2
2*	Drive Shaft, Gundrilled, 32-32 Spline	5991-XX	1
2*	Drive Shaft, Titanium, Gundrilled, 32-32 Spline	5991TG	1
3	U-Bolt Assembly	3655M	2
4	Washer	3696-32	2
5	Retaining Ring	8831	2
6	Drive Line Spring	5269-32	2

* Specify Length When Ordering

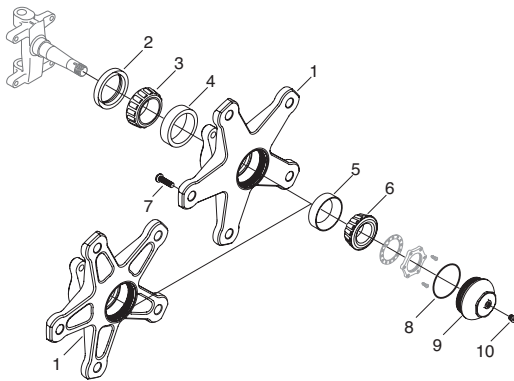
KIT P/N 9380

Gundrilled from solid stock, this 32 spline drive shaft has several advantages. Compared to the antiquated 16 spline assembly, which binds under load, this updated 32 spline assembly glides effortlessly. A large (1.275) O.D. results in less drive shaft whip, extended joint life and reduced drive shaft vibration. This results in a much freer race car. Kit includes (2) Aluminum 32 Spline Slip Yokes, (1) 32-32 Spline Drive Shaft, (2) U-Bolt Assemblies and (2) Drive Line Springs.

WIDE 5 FRONT HUB KIT

KIT P/N 12292 KIT P/N 12292L **Lightweight**

- 5 Spoke Wide 5 Hubs
- Forged 2024-T3 Aluminum Construction
- Oil or Grease Friendly
- Accepts Standard or Super Free Angular Contact Bearings



Kit Includes

#	DESCRIPTION	P/N	QTY
1	Direct Mount Hub	12076	2
1*	Direct Mount Hub, Lightweight	12076LW	2
2	Single Lip Seal, Viton	12363	2
3	Inner Bearing Cone	7502	2
4	Inner Bearing Cup	7501	2
5	Outer Bearing Cup	8635	2
6	Outer Bearing Cone	8666	2
7	5/8-11 x 2 1/2" Stud	1701	10
8	O'Ring	7424	2
9	Screw-In Dust Cap	12101	2
10	Plug	7874S	2

* Order Kit P/N 12292L for Lightweight Hubs

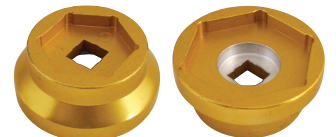
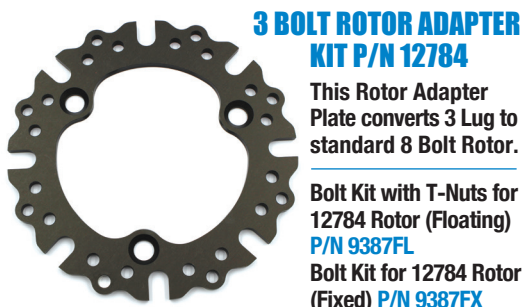


LOW DRAG!

Option 8254S-2
Angular Contact Bearing Upgrade w/ Steel Balls, One Pair of Hubs

Option 8254S-1
Angular Contact Bearing Upgrade w/ Steel Balls, One Hub Only

INDIVIDUAL BEARING PART NUMBERS
P/N 8666ACS Outer Angular Contact Bearing
P/N 8999ACS Inner Angular Contact Bearing



**Double Sided Hub Cap Socket
P/N 3153M**

2 7/8" WIDE 5 HUB KITS

REAR KIT

KIT P/N 3750 (#1-15)

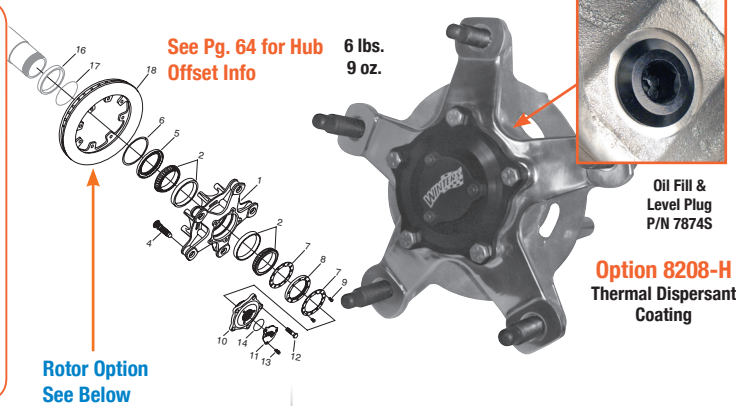
Kit includes polished permanent mold aluminum hub, 5 bolt 7075-T6 aluminum inverted drive flange, bearings and seal kit with trick style steel lock nut kit.



Kit Includes

#	DESCRIPTION	P/N	QTY
1	Rear Hub	3266	1
2	Bearing Cup & Cone Set	8658	2
4	Wheel Stud, Solid	5688	5
5	Seal	7284V	1
5*	Seal	7289V	1
6	Retaining Washer	8349	1
7	Washer	3273	2
8	Spindle Nut, Steel	3271S	1
9	10-24 x 3/8" BHCS	8740	2
10	Drive Flange	3267	1
11	Drive Flange Cap	6581	1
12	7/16-14 x 1-1/4" HHCS	7117	5
13	1/4-20 x 1/2" 12pt	7892	3
14	O'Ring	7417	1
16*†	Spacer	3262	1
17*†	O'Ring	7490	1
18	Rotor Option	See Below	

*For Use with Splined Tubes †Sold Separately



Option 8208-H
Thermal Dispersant Coating

Option 8284X5
Titanium Drive Flange Studs

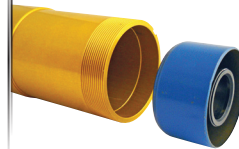


Spindle Lock Kit
P/N 4301 Aluminum
P/N 4301S Steel

LOW DRAG!
Purchase Separately
P/N 7325 ACS



Option 8254S-287
Super Free Angular Contact Bearings w/ Steel Balls, Hub



IMPORTANT
This seal must be used in conjunction with our 2-7/8" Wide 5 Oil Filled Hubs. Install seal in tube to a depth of 3/4"-13/16".

FRONT KIT

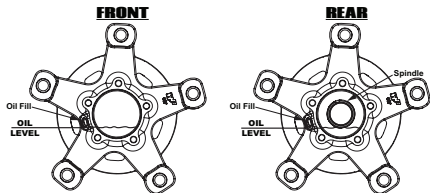
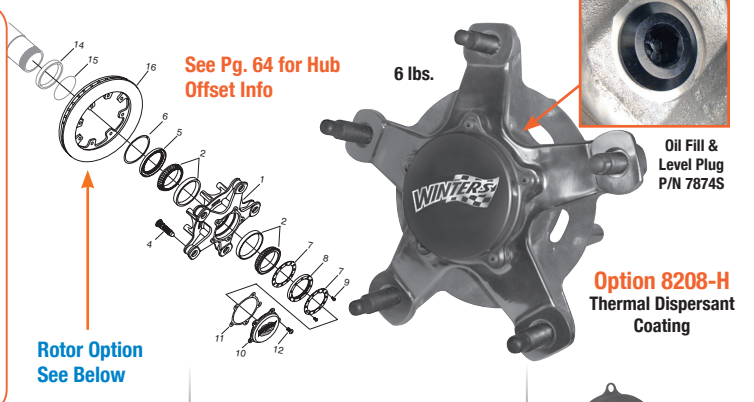
KIT P/N 3750F (#1-13)

Kit includes polished permanent mold aluminum hub, 5 bolt dust cap, bearings and seal kit with trick style steel lock nut kit.

Kit Includes

#	DESCRIPTION	P/N	QTY
1	Front Hub	3266F	1
2	Bearing Cup & Cone Set	8658	2
4	Wheel Stud, Solid	5688	5
5	Seal	7289V	1
6	Retaining Ring	8349	1
7	Washer	3273	2
8	Spindle Nut, Steel	3271S	1
9	10-24 x 3/8" BHCS	8740	2
10	Hub Cap	3289	1
11	Gasket	3278	1
12	5/16-18 x 3/4" SHCS	7145	5
14†	Spacer	3262F	1
15†	O'Ring	7490	1
16	Rotor Option	See Below	

†Sold Separately



PROPER OIL LEVEL IS CRITICAL
See page 119 for filling & oil level instructions.
Use Winters P/N 1730 SAE 80W/90 or Mobil 1® 75-90 Oil.

Option 8204
Titanium Wheel Studs

Option 8204H
Titanium Wheel Studs, Gundrilled



Spindle Nut Wrench Plate
P/N 3269



Hub Cap
P/N 3289

ROTOR OPTIONS (Additional Charge)

Rotor options applicable with hub assembly purchase only.

OPTION	DIMENSION	ROTOR P/N	OPTION	DIMENSION	ROTOR P/N
8240	.810 x 12 1/8"	2394	*8243L	1 1/4" x 11 3/4"	6608GML
8241	.810 x 11 3/4"	2394GM	*8241L	.810 x 11 3/4"	2394GML
8243	1 1/4" x 11 3/4"	6608GM	* Drilled Rotor		

FRONT SPINDLES

2 7/8" ALUMINUM FRONT SPINDLES

ASSEMBLY P/N 3796 Right Front Assembly

ASSEMBLY P/N 3795 Left Front Assembly

Assembly comes with king pin & cap. Check out our 2 7/8" Front Wide 5 Hub Assembly P/N 3750F (see page 8).

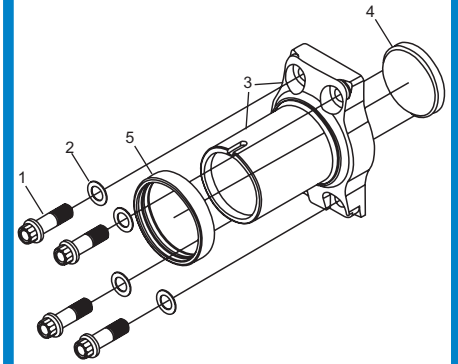
P/N 3796



P/N 3795



Forged 7075-T6 Aluminum



Assembly Includes

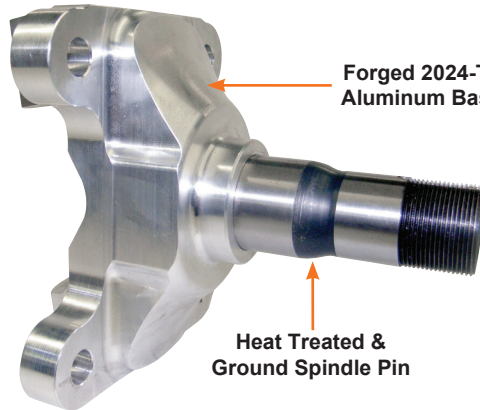
#	DESCRIPTION	P/N	QTY
1	Screw	3603-01	4
2	Washer	3604	4
3	Spindle Base & Snout	3608	1
4	Cup Plug	3639	1
5	Steel Spacer	3262F	1



Grooved Washer
P/N 3624



Steel King Pin
P/N 6476
Steel King Pin Cap
(1/2 x 20 Thread Size)
P/N 1109



10° FRONT SPINDLE

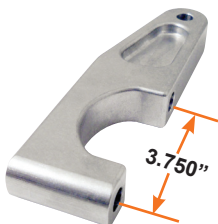
P/N 12291 Also Comes In Black P/N 12291B

**10° FRONT SPINDLE WITH TITANIUM PIN
P/N 12291T**

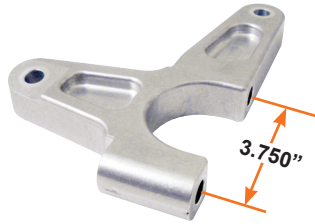
Features a Forged 2024-T3 Aluminum Base with a Heat Treated and Ground Spindle Pin. Check out our Wide 5 Front Hub Kits (see page 7).



Steel King Pin
P/N 6476
Steel King Pin Cap
(1/2 x 20 Thread Size)
P/N 1109



Steering Arm, Right
P/N 12381
Also Comes In
Black
P/N 12381B



Combo Steering Arm, Left
P/N 12380 Also Comes
In Black P/N 12380B



Nut P/N 3460
Washer P/N 7859
Cotter Pin P/N 9303

Aluminum Castellated
Spindle Nut Assembly
P/N 12365



Brake Bracket
P/N 12408
3/8" Offset
Dynalite Single Caliper
For Use with 10 3/4" Rotor



Steel Spindle
Nut Assembly
P/N 2377S



King Pin
Shim Kit
P/N 7511-01



Replacement
Bushing
P/N 7515

TORSION BARS, AXLES & DIMENSIONAL DATA

SOLID TORSION BARS



Premium Heat Treated Steel! There Is A Difference!

When Ordering, Add Suffix Of Desired Diameter Bar To P/N
Ex. P/N 6362-825 = 29" Bar, .825 Diameter

DESCRIPTION	P/N
Solid 29" Bar Available In Various Sizes	6362
Solid 26" Bar Available In Various Sizes	6567

LENGTH	AVAILABLE DIAMETERS
26"	.775, .800, .825, .850, .875, .900, .925, 1.025, 1.050, 1.075, 1.100
29"	.825, .850, .875, .900, .925, .950, .975, 1.000, 1.025, 1.050, 1.075, 1.100, 1.125

FULL FLOATING DOUBLE SPLINED AXLES

Winters Titanium Axles

Lighter than gundrilled steel axles, Titanium Axles have four times the elasticity of steel. Their ability to wind up gives you a performance edge. Excellent for dirt and asphalt.

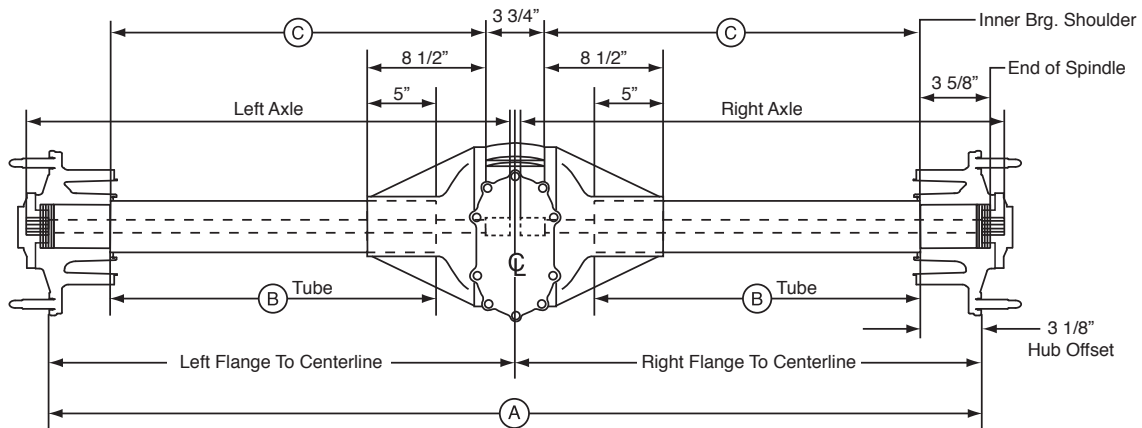
Winters Premium Steel Axles

Made from the finest material and CNC machined using an automatic double roller steady rest assuring that all axles run true and concentric. Finished with state of the art heat treat and available solid or gundrilled.



AXLE TYPE	SPLINE	STYLE	P/N
Double Spline	31/24	Gundrilled	5067G
Double Spline	31/24	Solid	5067
Double Spline	31/24	Solid, Titanium	5067T
Double Spline	31/24	Gundrilled, Titanium	5067TG

WIDE 5 DIRT MODIFIED 2 7/8" DIMENSIONAL DATA



A	B	C	DOUBLE SPLINED AXLE LENGTH (W/SPOOL)	TUBE END TO END LENGTH (FOR REFERENCE ONLY)
62	22.500	26.000	31.500	26.125
60	21.500	25.000	30.500	25.125
58	20.500	24.000	29.500	24.125

Please Note: Popular Dimensions Shown. All Dimensions Available.

AXLE LENGTH FORMULAS

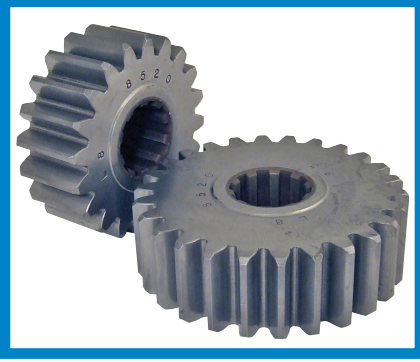
Aluminum Locker, Winters Track & Triple Track	Lightweight Alum Locker	Spool	Track Star
Right Axle = $\frac{\text{Flange to Flange} + 0.500"}{2} + \text{Offset}$	Right Axle = $\frac{\text{Flange to Flange} + 1.875"}{2} + \text{Offset}$	Right Axle = $\frac{\text{Flange to Flange} + 0.500"}{2} + \text{Offset}$	Right Axle = $\frac{\text{Flange to Flange} + 2.625"}{2} + \text{Offset}$
Left Axle = $\frac{\text{Flange to Flange} + 0.500"}{2} - \text{Offset}$	Left Axle = $\frac{\text{Flange to Flange} + 0.625"}{2} - \text{Offset}$	Left Axle = $\frac{\text{Flange to Flange} + 0.500"}{2} - \text{Offset}$	Left Axle = $\frac{\text{Flange to Flange} + 1.375"}{2} - \text{Offset}$

10 SPLINE QUICK CHANGE GEARS

P/N 8500 SERIES (1 3/8" WIDE)

SAE 8620 Steel, Crown Cut, 10 Spline Quick Change Gears. When ordering add prefix '85' to set number. Example: 8501

A full sized poster version of this chart is available. Order **P/N Poster-10**
Remember to refill gear cavity with good quality gear lube after gear changes.



GEARING FORMULAS

To Determine Gear RPM Change:
 $(RPM) \div (\text{Gear Ratio}) \times (\text{New Ratio}) = (\text{New RPM})$
 Example $8000 \div 6.59 \times 6.40 = 7769$

$$\frac{\text{Ratio} \times \text{MPH}}{\text{Tire DIA}} \times 336 = \text{RPM}$$

or

$$\text{Ratio} = \frac{\text{RPM} \times \text{Tire DIA}}{\text{MPH} \times 336}$$

To Determine Final Drive:
 $(\# \text{ Teeth Top Gear}) \div (\# \text{ Teeth Bottom Gear}) \times \text{R\&P Ratio} = \text{Final Drive}$

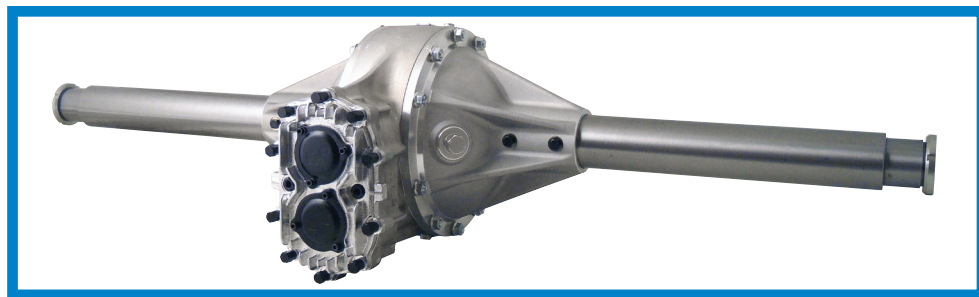
(NUMERICAL RATIO LISTED)				4.12 R&P Ratio (8-33 Teeth)		4.57 R&P Ratio (7-32 Teeth)		4.86 R&P Ratio (7-34 Teeth)		(NUMERICAL RATIO LISTED)				4.12 R&P Ratio (8-33 Teeth)		4.57 R&P Ratio (7-32 Teeth)		4.86 R&P Ratio (7-34 Teeth)	
GEAR SET #	LOW SPUR RATIO	HIGH SPUR RATIO	# OF TEETH	LOW	HIGH	LOW	HIGH	LOW	HIGH	GEAR SET #	LOW SPUR RATIO	HIGH SPUR RATIO	# OF TEETH	LOW	HIGH	LOW	HIGH	LOW	HIGH
01	1.000	1.000	21/21	4.12	4.12	4.57	4.57	4.86	4.86	14A	.714	1.400	20/28	2.94	5.77	3.26	6.40	3.47	6.80
02	.964	1.037	27/28	3.97	4.27	4.41	4.74	4.69	5.04	35	.708	1.412	17/24	2.92	5.82	3.24	6.45	3.44	6.86
05	.960	1.042	24/25	3.96	4.29	4.39	4.76	4.67	5.06	32	.704	1.421	19/27	2.90	5.86	3.22	6.49	3.42	6.90
15A	.955	1.048	21/22	3.93	4.32	4.36	4.79	4.64	5.09	32A	.697	1.435	23/33	2.87	5.91	3.19	6.56	3.39	6.97
15	.950	1.053	19/20	3.91	4.34	4.34	4.81	4.62	5.11	24	.690	1.450	20/29	2.84	5.97	3.15	6.63	3.35	7.04
26	.931	1.074	27/29	3.84	4.43	4.26	4.91	4.53	5.22	36	.680	1.471	17/25	2.80	6.06	3.11	6.72	3.31	7.14
06	.920	1.087	23/25	3.79	4.48	4.20	4.97	4.47	5.28	37	.677	1.476	21/31	2.79	6.08	3.10	6.75	3.29	7.17
25	.909	1.100	20/22	3.75	4.53	4.16	5.03	4.42	5.34	23	.667	1.500	22/33	2.75	6.18	3.05	6.86	3.24	7.29
12	.897	1.115	26/29	3.69	4.60	4.10	5.10	4.36	5.42	21	.655	1.526	19/29	2.70	6.29	2.99	6.98	3.18	7.41
07	.885	1.130	23/26	3.65	4.66	4.04	5.17	4.30	5.49	21A	.652	1.533	15/23	2.69	6.32	2.98	7.01	3.17	7.45
07A	.875	1.143	21/24	3.61	4.71	4.00	5.22	4.25	5.55	27	.647	1.545	22/34	2.67	6.37	2.96	7.06	3.15	7.51
17	.867	1.154	26/30	3.57	4.75	3.96	5.27	4.21	5.60	43	.640	1.563	16/25	2.64	6.44	2.93	7.14	3.11	7.59
17A	.857	1.167	24/28	3.53	4.81	3.92	5.33	4.17	5.67	28	.633	1.579	19/30	2.61	6.51	2.89	7.22	3.08	7.67
08A	.852	1.174	23/27	3.51	4.84	3.89	5.37	4.14	5.70	28A	.630	1.588	17/27	2.59	6.54	2.88	7.26	3.06	7.71
08	.846	1.182	22/26	3.49	4.87	3.87	5.40	4.11	5.74	29	.625	1.600	15/24	2.58	6.59	2.86	7.31	3.04	7.77
19	.840	1.190	21/25	3.46	4.91	3.84	5.44	4.08	5.78	39	.621	1.611	18/29	2.56	6.64	2.84	7.36	3.02	7.83
09A	.833	1.200	25/30	3.43	4.94	3.81	5.48	4.05	5.83	30	.615	1.625	16/26	2.54	6.70	2.81	7.43	2.99	7.89
09	.826	1.211	19/23	3.40	4.99	3.78	5.53	4.02	5.88	40	.613	1.632	19/31	2.53	6.72	2.80	7.46	2.98	7.93
11	.815	1.227	22/27	3.36	5.06	3.72	5.61	3.96	5.96	41	.607	1.647	17/28	2.50	6.81	2.76	7.53	2.95	8.00
03	.806	1.240	25/31	3.32	5.11	3.69	5.67	3.92	6.02	31	.600	1.667	21/35	2.47	6.87	2.74	7.62	2.92	8.10
13	.800	1.250	20/25	3.30	5.15	3.66	5.71	3.89	6.07	33A	.593	1.688	16/27	2.44	6.95	2.71	7.71	2.88	8.20
18	.793	1.261	23/29	3.27	5.20	3.62	5.76	3.85	6.12	33	.588	1.700	20/34	2.42	7.00	2.69	7.77	2.86	8.26
18A	.786	1.273	22/28	3.24	5.24	3.59	5.82	3.82	6.18	31A	.583	1.714	21/36	2.40	7.06	2.67	7.83	2.84	8.33
04A	.783	1.278	18/23	3.22	5.26	3.58	5.84	3.80	6.21	30A	.577	1.733	15/26	2.38	7.14	2.64	7.92	2.80	8.42
20A	.778	1.286	21/27	3.20	5.30	3.55	5.88	3.78	6.25	50	.571	1.750	20/35	2.35	7.21	2.61	8.00	2.78	8.50
04	.774	1.292	24/31	3.19	5.32	3.54	5.90	3.76	6.27	51	.567	1.765	17/30	2.34	7.27	2.59	8.07	2.75	8.57
20	.769	1.300	20/26	3.17	5.36	3.52	5.94	3.74	6.31	52	.563	1.778	18/32	2.32	7.32	2.57	8.12	2.73	8.64
22	.760	1.316	19/25	3.13	5.42	3.47	6.01	3.69	6.39	53	.559	1.789	19/34	2.30	7.37	2.55	8.18	2.72	8.69
16	.750	1.333	18/24	3.09	5.49	3.43	6.09	3.65	6.48	54	.556	1.800	15/27	2.29	7.42	2.54	8.23	2.70	8.74
10	.739	1.353	17/23	3.05	5.57	3.38	6.18	3.59	6.57	55	.552	1.813	16/29	2.27	7.47	2.52	8.28	2.68	8.80
10A	.733	1.364	22/30	3.02	5.62	3.35	6.23	3.56	6.62	56	.548	1.824	17/31	2.26	7.51	2.51	8.33	2.67	8.86
34A	.727	1.375	16/22	3.00	5.67	3.32	6.28	3.54	6.68	57	.533	1.875	16/30	2.20	7.73	2.44	8.57	2.59	9.11
34	.724	1.381	21/29	2.97	5.69	3.31	6.31	3.52	6.71	58	.531	1.882	17/32	2.19	7.76	2.43	8.60	2.58	9.14
14	.719	1.391	23/32	2.96	5.73	3.29	6.36	3.49	6.76										

NOTE: Gear Set Numbers 50-58 Are For Limited Horsepower Applications Only

10" SET-UP INSTRUCTIONS

Do Not Torch

350°F plus and heat treat is permanently lost. Localized hot spots cause permanent distortion and loss of critical alignments. Castings will “crack” if subjected to torching.



Magnesium can be ignited - Exercise CAUTION!

Preparatory To Installing Pinion Into Case (Center Section)

- 1-Retain pinion nose bearing on to the pinion gear with fast dry thread lock to insure the bearing does not fall off during installation into the center section.
- 2-Check and remove any nicks or burrs in the center section pinion bore. Make sure center is clean and free of chemicals or flammable materials.
- 3-Heat the “clean” center to 270° - 300°F in an oven.
(DO NOT over heat as loss of heat treatment or distortion will occur.)

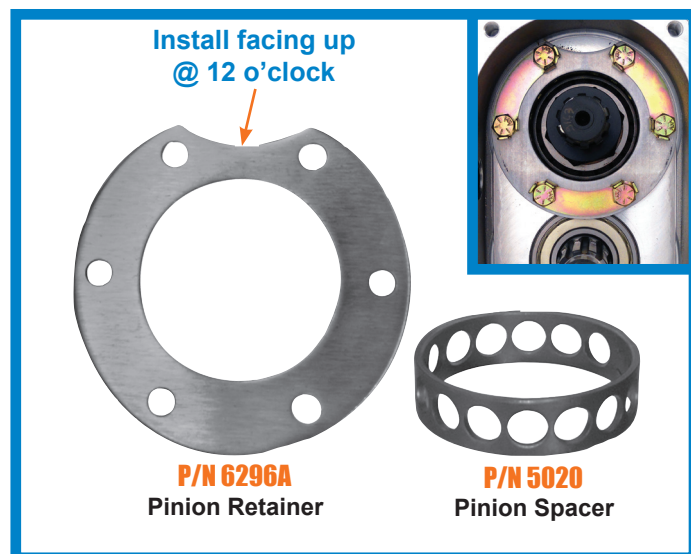
Installing Pinion Into Case

Remove heated center section from the oven and lubricate the pinion bearing bores and bearings. Install “chilled” pinion, then use a urethane (soft) hammer to insure the pinion is seated.

Install the lower shaft and bearings while the center is still hot (don't burn yourself).

- 1-Lubricate all bearing bores.
- 2-Start front ball bearing into case bore approximately 1/8.”
- 3-Install lower shaft through center section from rear to front into ball bearing.
- 4-Slide rear ball bearing over installed shaft and carefully tap rear bearing evenly into place. Pinion spacer P/N 5020 and pinion retainer P/N 6269A should now be installed using (6) P/N 7110 HHCS 3/8-16 x 1” torqued to 20-25 ft lbs.

Note: All bolts threaded into magnesium or aluminum should be treated with an anti-seize product.



- 5-Front ball bearing can now be evenly tapped into place. Note: The above assembly procedure is to insure that bearings do not “cock” sideways in center section.
- 6-Front seal plate may now be installed and retaining bolts torqued to 20-25 ft lbs.

Allow assembled unit to cool to room temperature 68-72°F before attempting to adjust pinion bearing preload.

10" SET-UP INSTRUCTIONS

Tapered Roller Bearing Pinion Preload

1-When adjusting pinion bearing posi-lock with new bearings, torque the posi nut to obtain 15-20 in lbs, pinion bearing rotational preload. 3-5 in lbs for REM® Bearings. 8-10 in lbs for used bearings. Lubricate O'Ring in posi-lock retaining cap. Install retaining cap (use finger pressure only). If it resists engagement, remove cap from pinion and rotate to next spline on 10 spline shaft and re-install. 10 splines =10 combinations...Try each spline for the best "no resistance" fit. Above preloads are set at 68°-72°F



Angular Contact Bearing Pinion Preload

After pinion is installed and case has cooled down to room temperature (68°-72°F), torque the pinion nut to 80-100 Ft Lbs (approximate) Pinion preload is set. Lubricate O'Ring in posi-lock retaining cap. Install retaining cap (use finger pressure only). If it resists engagement, remove cap from pinion and rotate to next spline on 10 spline shaft and re-install.

Carrier Assembly and Ring Gear

- 1- Adjusting Carrier preload is next. Remove seals and O'Rings from bells. Do not install ring gear onto carrier or spool as of yet.
- 2- Stand left side bell and tube vertically with bell up. Install checking bearing on ring gear end of carrier or spool (refer to chart on page 115 for proper checking bearing).
- 3- Set carrier and bearing into left vertical bell.
- 4- Set center section assembly on bell, making sure center section is setting flat against bell flange without bell seals and O'Rings.
- 5- Install second checking bearing on carrier.

Whether using tapered roller bearings or angular contact bearings, side bell preload remains the same.

Note: Winters spools are manufactured to use approximately .080 shims for initial preload.

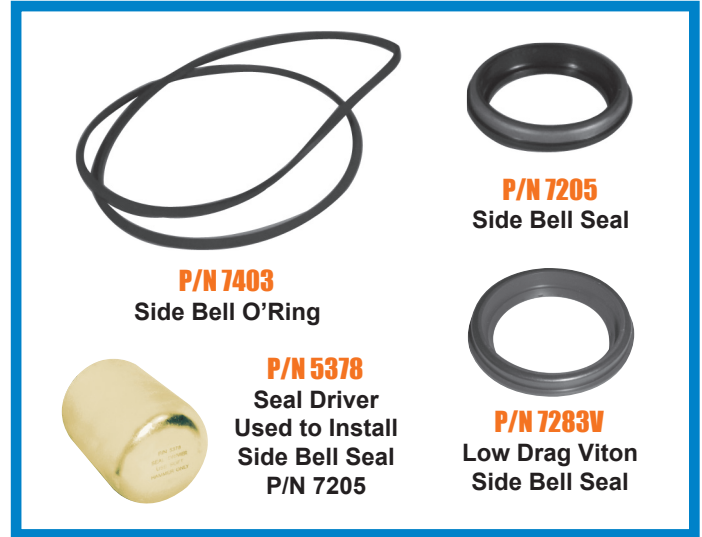
- 6- Right bell should now be put into position on top of center section. If bell flange has full contact with center section, shims should be added until right bell flange is held above center section approximately .015 for steel spool and steel Triple Track, .012 for Winters Track and Track Star, .010 for aluminum locker, and .010 for Winters aluminum spools and aluminum Triple Track. See figure 1 on page 115 for carrier bearing preload "crush."
- 7- Now that proper shim pack thickness has been determined, the shim pack should be removed and set aside for step number 9.
- 8- Ring gear should now be installed on carrier or spool making sure contact surfaces are perfectly clean. Install all 12 bolts and torque nuts alternating in a crisscross pattern in steps to 35 ft lbs (Use 60 ft lbs for threaded W/P type ring gear bolts using belleville washers). Loctite® adhesive should be used on these bolts.
- 9- Place one shim at a time under checking bearing on ring gear side of carrier. Placing carrier and ring gear assembly in left bell, set center section on left bell and check for ring gear/pinion backlash. Make sure adjustable ring gear pad in left bell is backed out far enough so that it does not make contact with the ring gear. (If you remove the wear pad completely DO NOT forget to replace it before tightening the thru bolts or complete rear will have to be disassembled to re-install the pad.) Carefully add shims until backlash has been removed. The remaining shims from the original shim pack should be installed on the opposite side of carrier. Put the right bell in place and bolt together. Check backlash. It should be between .004 and .006. If backlash is too much, shims from the right side must be moved to the left side. Once proper backlash is reached, the checking bearings can be removed and regular bearings installed, with shims in place.

10" SET-UP INSTRUCTIONS

Carrier Assembly and Ring Gear Continued

- 10-Install new side bell seals (P/N 7205) and O'Rings (4 & 6 rib bells P/N 7403T, 8 rib bells P/N 7403). Lubricate seals generously. Reassemble, install thrubolts, washers and nuts. Be sure to torque thrubolts in steps until a final torque of 35 ft lbs is reached using an alternating crisscross sequence. Spin the pinion over several times checking the backlash at several intervals. Backlash should be between .004 and .006. If backlash is not correct, the rear must be torn apart and the shims swapped from side to side until proper backlash is obtained. Tight spots are not acceptable.
- 11-Adjust ring gear wear pad by running wear pad in against the ring gear with force of 5 in lbs, then back off approximately 1/4 turn to obtain .008 to .010 clearance between ring gear and wear pad. Tighten jam nut on adjusting screw being careful not to turn adjusting screw any further.

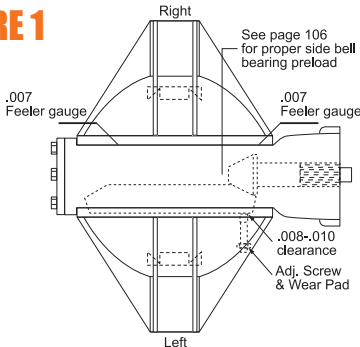
Note: Assembly Temperature: 68° - 72°F



COMMONLY USED REPLACEMENT PARTS

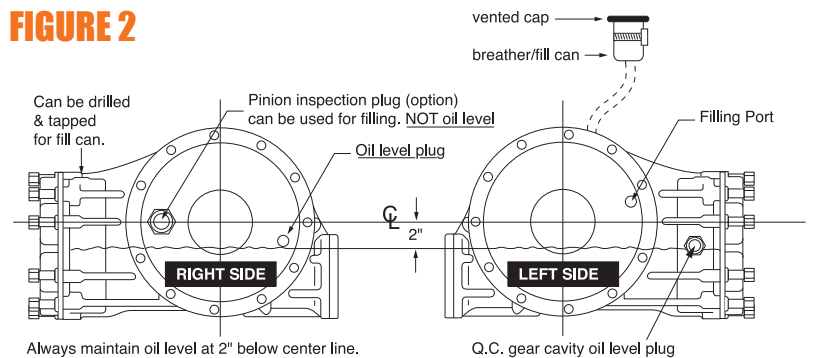
DESCRIPTION	SIZE	P/N	DESCRIPTION	SIZE	P/N
Carrier Bearing, Aluminum Carrier	2.031	7340	0.750 Front Yoke Viton Seal	----	7204V
Checking Bearing, Angular Contact, Aluminum Carrier	2.031	7340ACB	Gear Cover Gasket, 10 Bolt	----	6729
Checking Bearing, Aluminum Carrier	2.031	5294	Heavy Duty Gear Cover Gasket, 10 Bolt	----	6729HD
Carrier Shim Kit, Aluminum	2.031	5295	O'Ring, Bell, 4 & 6 Rib	----	7403T
Side Bell Seals	----	7205	O'Ring, Bell, 8 Rib	----	7403
Side Bell Seals, Low Drag, Viton	----	7283V	Winters Threaded Ring Gear Bolts w/ Washers, 12 each	----	7868
0.375 Front Yoke Seal	----	7204	Winters 80-90-140 Semi Synthetic Gear Oil w/ Moly	----	1730
0.750 Front Yoke Seal	----	7204T			

FIGURE 1



Whether using tapered roller bearings or angular contact bearings, side bell preload remains the same.

FIGURE 2



Always maintain oil level at 2" below center line. Make sure rear is level when checking oil.

Important!
Over-filling can cause problems as well as under-filling.

LIMITED WARRANTY

Background

Winters Performance Products, Inc., referred to herein as “Winters”, manufactures parts and equipment which are purchased by persons in various industries, who may install and use Winters parts and equipment in applications which may not be suitable for that Purchaser’s intended purpose. Purchaser understands, recognizes and acknowledges that all parts and equipment manufactured or sold by Winters are exposed to many, varied and unforeseeable uses and conditions. As a consequence, Winters can make no promise, warranty, affirmation or representation as to the performance of its parts or equipment, nor does Winters make any description of the parts or equipment sold to Purchaser, nor does Winters make any description or affirmation of fact concerning any sample or model of parts or equipment except as specifically set forth in this Limited Warranty. As further consideration for Purchaser using Winters’ parts or equipment, Purchaser acknowledges that, due to differing conditions and circumstances under which all parts and equipment are installed and used, Purchaser is not relying on Winters’ skill and judgment to select or furnish the proper part or equipment. Purchaser expressly affirms that it is relying on its own expertise, skill, and judgment to select, purchase, and install parts or equipment which are suitably safe and durable for their intended purpose. Purchaser assumes all risks associated with the performance of Winters’ parts.

Limited Warranty

Winters warrants to Purchaser that any part or equipment manufactured by Winters (“a Part”) will conform to the description of such Part contained in the catalog most recently published by Winters prior to the time of sale of such part or equipment to Purchaser (“the Description”). **WINTERS MAKES NO OTHER WARRANTY, EITHER EXPRESS OR IMPLIED WITH RESPECT TO ANY PART. WINTERS EXPRESSLY DISCLAIMS ANY WARRANTY OF MERCHANTABILITY OR FITNESS FOR ANY PARTICULAR USE OR PURPOSE AND EXPRESSLY DISCLAIMS ANY WARRANTY AS TO PERFORMANCE OF ANY PART.** The liability of Winters for breach of the foregoing warranty is limited to repair or replacement of any Part determined to fail to conform to its Description prior to installation and use. The burden of establishing that any Part fails to conform to its Description shall be upon Purchaser. In order to be entitled to repair or replacement of any Part, Purchaser must (i) inspect the Part upon receipt; and (ii) notify Winters in writing of the defect **PRIOR TO INSTALLATION OF THE PART.** In no event shall Winters be liable hereunder for any Part which has been installed. Purchaser assumes all risk relating to a Part once such Part is installed. **WINTERS SHALL NOT BE LIABLE FOR ANY CONSEQUENTIAL, SPECIAL OR INDIRECT DAMAGES (INCLUDING BUT NOT LIMITED TO LOST PROFITS) OR FOR LOSS OR DAMAGE DIRECTLY OR INDIRECTLY ARISING FROM THE USE OF A PART.** Every claim under this Limited Warranty shall be deemed waived unless made in writing within ninety (90) days of delivery of the Part by Winters to Purchaser. Purchaser acknowledges that, due to the multiple uses of Parts, it is impossible for Winters to predict the performance of any Parts once installed or the suitability of any Parts for any particular use. Purchaser expressly acknowledges its obligation to inform all users (customers) of the above disclaimer.

Indemnity Against Third Party Claims

PURCHASER HEREBY AGREES TO INDEMNIFY AND HOLD HARMLESS WINTERS FROM AND AGAINST ANY AND ALL CLAIMS, LIABILITY, LOSS AND DAMAGES, INCLUDING ATTORNEYS FEES, MADE BY ANY THIRD PARTY AGAINST WINTERS RELATING TO A PART OR THE USE OF ANY PART. Purchaser understands and agrees that no officer, director, employee or agent of Winters (including but not limited to any vendor, dealer, or distributor) has any authority to make any statements contrary to the terms of this Limited Warranty. Winters specifically disavows any statements contrary to what is above written.

Choice of Law/Venue

This Limited Warranty shall be governed by and construed in accordance with the laws of the Commonwealth of Pennsylvania. Any legal action which may arise as a result of disputes, controversies, or claims arising out of or related to this Limited Warranty or the purchase or use of any Part shall be litigated exclusively in the Court of Common Pleas of York County, Pennsylvania or the United States District Court for the Middle District of Pennsylvania.

Miscellaneous

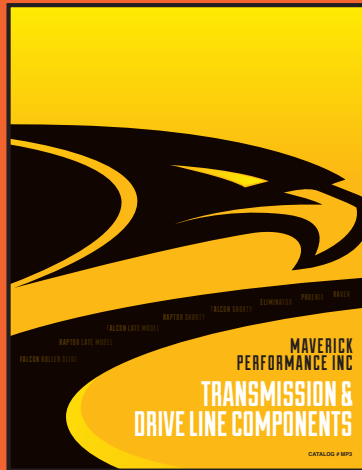
This writing constitutes the full, complete and final statement of Winters’ Limited Warranty for Parts. All prior oral and written correspondence, test data, negotiations, representations, understandings and the like regarding Parts are merged in this writing and extinguished by it. This Limited Warranty may not be altered, amended, extended or modified except by a writing signed by the President or Vice President of Winters. Winters’ failure at any time to enforce any of the terms and conditions stated herein shall not constitute a waiver of any of the provisions herein. This Limited Warranty shall not be assigned by Purchaser. Winters responsibility for merchandise shipped via common carrier ceases upon delivering the order to the carrier. Winters is not responsible for merchandise lost or damaged in transit. Purchaser must file a claim with the delivery carrier for merchandise lost or damaged during transit. Winters will assist Purchaser by supplying any information necessary for submission of a claim. It is the responsibility of the Purchaser to comply with all laws and regulations, Federal, State and Local, governing resale of products sold by Winters. NSF Charge: \$38.00 per returned check/payment. Repayments must be by cashier check or money order.

On request, all parts in Winters Performance Products, Inc. inventory and/or catalog are available in super strength heat treated steel (300,000/350,000 P.S.I. tensile strength) @ extra cost and special order. Refer to machinery handbook for strengths of other materials.

RACING IS A DANGEROUS SPORT THAT CAN RESULT IN SERIOUS INJURY OR DEATH. THE ULTIMATE RESPONSIBILITY FOR PARTICIPANT AND VEHICLE SAFETY LIES WITH THE PARTICIPANT.

LONGSTANDING NAME!

Proven Performance!



We invite you to explore our other winning product lines.

Winters Performance
1580 Trolley Road
York, PA 17408 USA
P: 717-764-9844
F: 717-764-0617
wintersperformance.com
Catalog #WP7, Volume 3

